

Garment Designer 2.1

Update 6/05

This update includes the following:

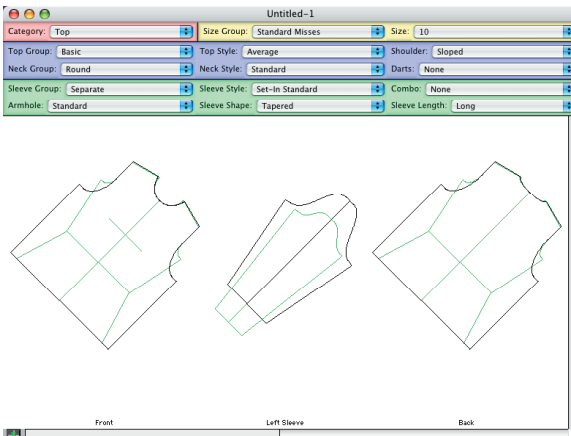
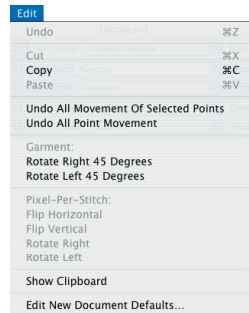
- OSX native installation (Macintosh only)
- The dart and final pattern display has been improved.
- Diagonal Rotations as found in the *Edit* menu and described below.

Edit Menu

Two Rotate 45 degree options have been added to the Edit menu. These may be used to rotate the pattern on screen 45 degrees to the left or to the right. Knitters may use these commands to achieve diagonal knitting instructions. Sewers may use these commands to rotate a pattern 45 Degrees to use in the Pattern Layout option (to determine yardages needed when a pattern piece is laid on the bias).

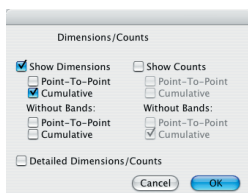
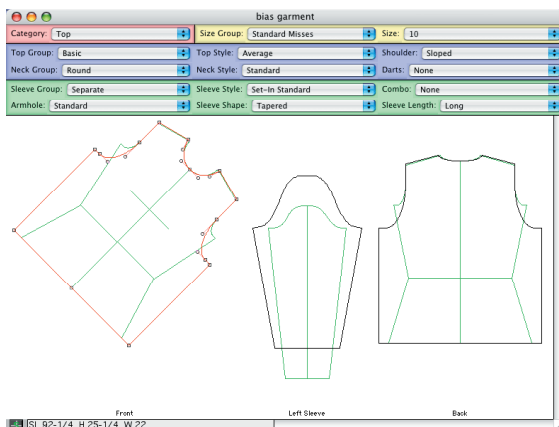
You may rotate all pattern pieces on the screen, or just selected pieces.

- To rotate all pieces, simply choose the *Edit>Rotate Right 45 Degrees* or *Edit Rotate Left 45 Degrees* menu.



2.1 Update

- To rotate selected pieces, click on the piece on the screen to select it, then choose the *Edit>Rotate*
Right 45 Degrees or *Edit Rotate Left 45 Degrees* menu command.



Diagonal Knitting

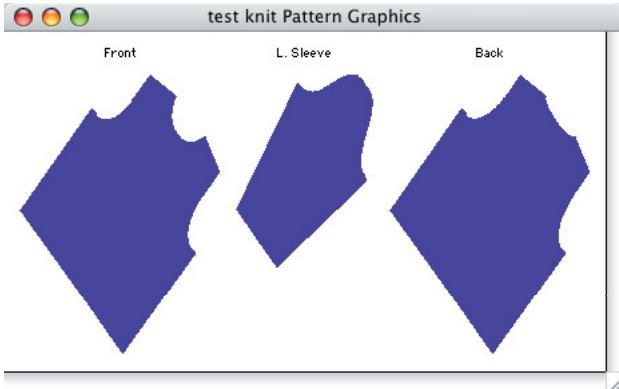
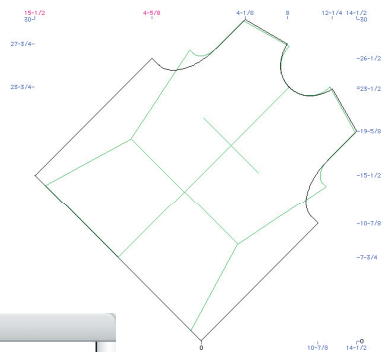
To create diagonal knitting instructions, perform the following steps:

1. Design your garment.
2. Rotate all pieces, or select the piece you want to rotate and choose the *Edit>Rotate 45 Degrees Left/Right* menu command.
3. Choose the *Display>Dimensions>Counts>Options* menu command and set the dimensions to *Cumulative*. Click on **OK**.
4. Click on the appropriate points to set the new '0' points to be at the appropriate point of the garment.
5. Choose *Generate>Pattern Pixel-Per-Stitch Graphics* menu command. The pixel-per-stitch window will appear.
6. Set the **Knit Options** as per your choice. Consider using the *Alternate Row* shaping

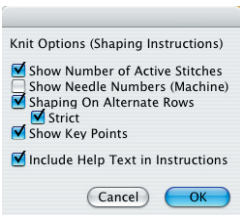


option as well as the *Strict* option. You will want to explore the shaping instructions for both to determine your preferred way of knitting.

2.1 Update



Set the new 'O' points, generate pixel-per-stitch graphics, set knitting options and generate instructions.



Alternate
Row Shaping

5	35	0	+1	50
4-7/8	34	+1	+1	49
4-3/4	33	+1	0	47
4-5/8	32	+1	+1	46
4-3/8	31	0	+1	44
4-1/4	30	+1	+1	43
4-1/8	29	+1	0	41
4	28	0	+1	40
3-7/8	27	+1	+1	39
3-3/4	26	+1	+1	37
3-3/8	24	+1	+1	35
3-1/4	23	+1	+1	33
3-1/8	22	+1	0	31
3	21	0	+1	30
2-7/8	20	+1	+1	29
2-3/4	19	+1	+1	27
2-3/8	17	+1	+1	25
2-1/4	16	+1	+1	23
2-1/8	15	0	+1	21
2	14	+1	0	20
1-7/8	13	+1	+1	19
1-3/4	12	+1	+1	17
1-3/8	10	+1	+1	15
1-1/4	9	+1	+1	13
1-1/8	8	0	+1	11
1	7	+1	0	10
7/8	6	+1	+1	9
3/4	5	+1	+1	7
3/8	3	+1	+1	5
1/4	2	+1	+1	3
1/8	1			1



2.1 Update

5	35	+1	0	50
4-7/8	34	0	+2	49
4-3/4	33	+2	0	47
4-5/8	32	0	+1	45
4-3/8	31	+1	0	44
4-1/4	30	0	+2	43
4-1/8	29	+1	0	41
4	28	0	+1	40
3-7/8	27	+2	0	39
3-3/4	26	0	+2	37
3-5/8	25	+1	0	35
3-3/8	24	0	+1	34
3-1/4	23	+2	0	33
3-1/8	22	0	+1	31
3	21	+1	0	30
2-7/8	20	0	+2	29
2-3/4	19	+1	0	27
2-5/8	18	0	+1	26
2-3/8	17	+2	0	25
2-1/4	16	0	+2	23
2-1/8	15	+1	0	21
2	14	0	+1	20
1-7/8	13	+2	0	19
1-3/4	12	0	+2	17
1-5/8	11	+1	0	15
1-3/8	10	0	+1	14
1-1/4	9	+1	0	13
1-1/8	8	0	+2	12
1	7	+2	0	10
7/8	6	0	+1	9
3/4	5	+1	0	7
5/8	4	0	+1	6
3/8	3	+2	0	5
1/4	2	0	+2	3
1/8	1			1

Alternate Row
Shaping with
Strict option.

Bias Pattern Planning for Sewers

You can use the diagonal rotation function to assist you in planning yardage and layouts for garments using bias cut. *The steps would be as follows:*

1. Design your garment.
2. Add all additions such as hems, facings, seam allowances, etc.
3. Select the pattern piece that you want to use on the bias by clicking on it in the main window.
4. Choose the *Edit>Rotate Right 45 Degrees* or *Edit Rotate Left 45 Degrees* menu. The piece will rotate.
5. Choose the *Generate>Pattern Layout* menu command. The layout window will open.

6. Move your pattern pieces around to determine how much fabric you will need.

