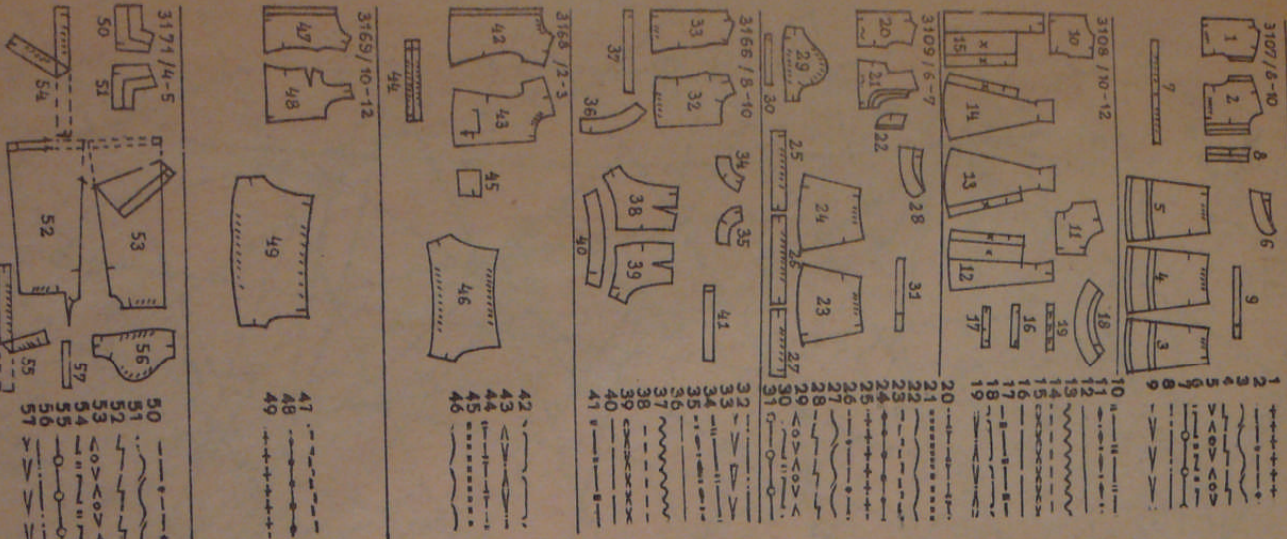
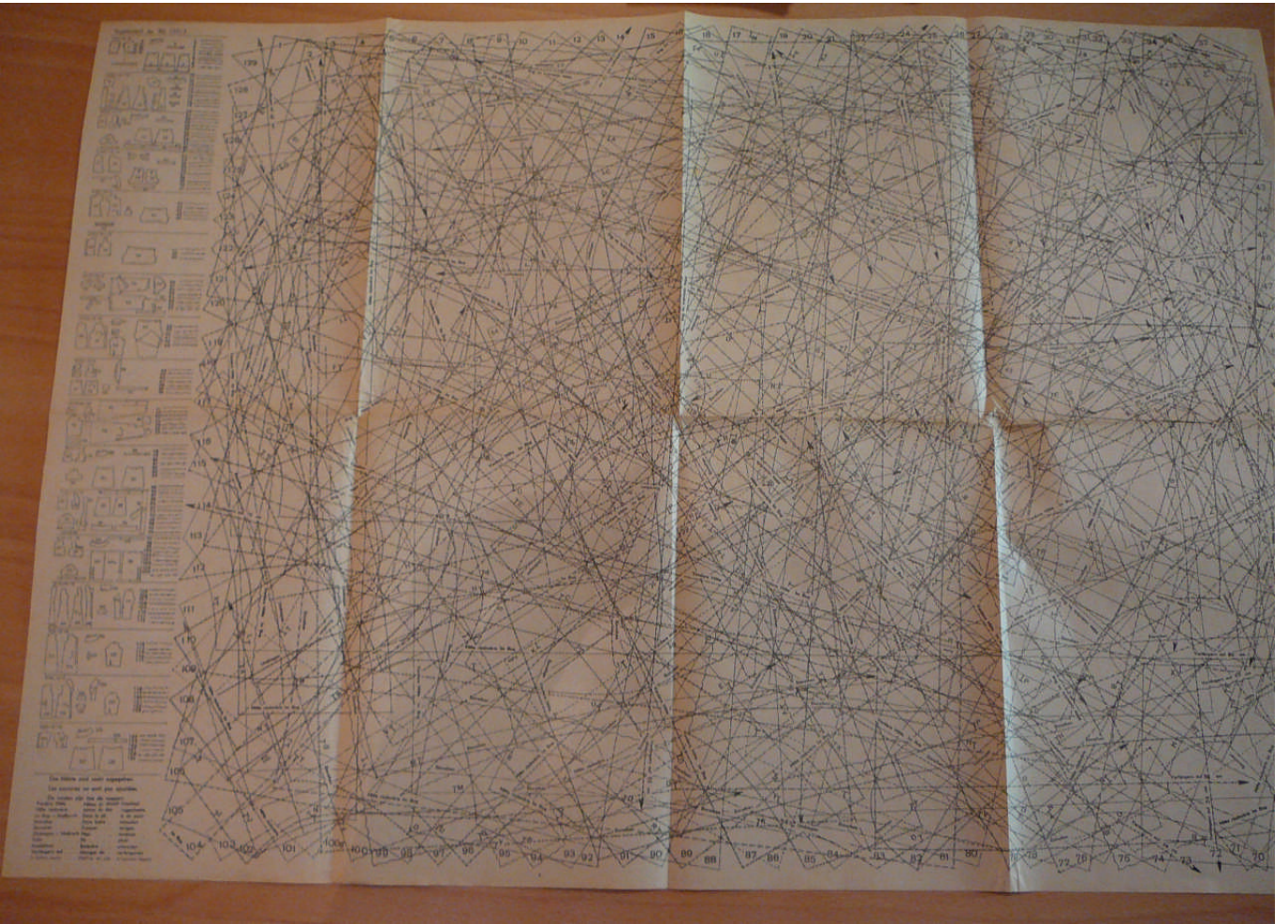


**ERMACORA-KREISS**  
 Zuschneide-Institut · Manne Schneider · Saarbrücken 3  
 Zeichenheft  
 für ...

1938

Supplément au N° 133/3





3091 / 1

94 95

96

97 98 99

99

3092 / 2-3

100 101

102 103 104 105

100 101 102 103 104 105

3093 / 1

106 107

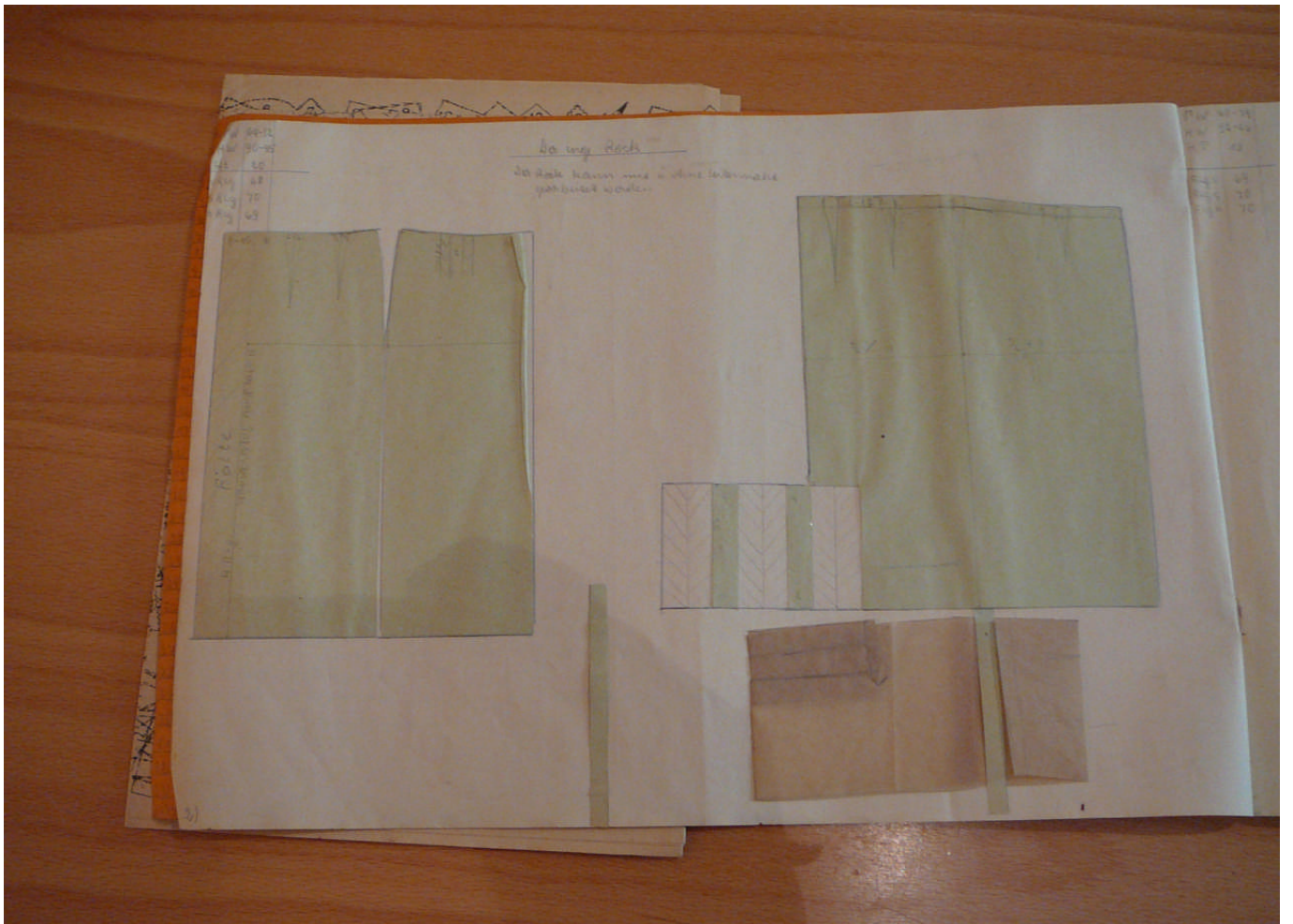
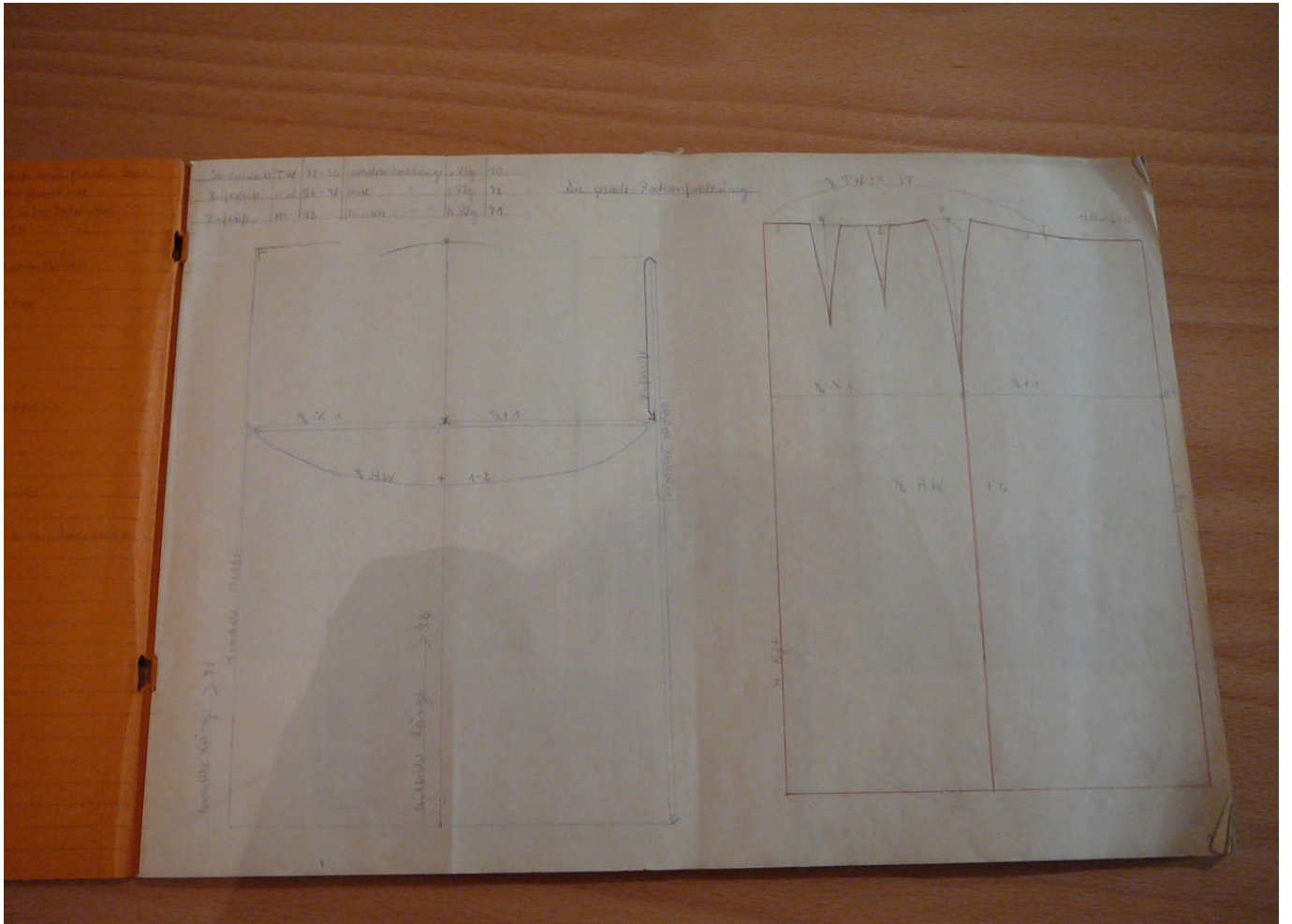
108 109 110

106 107 108 109 110

87 88 89 90 91

Die Nähte sind nicht zugegeben.  
 Les coutures ne sont pas ajoutées.  
 De noden zijn toe de voegen.

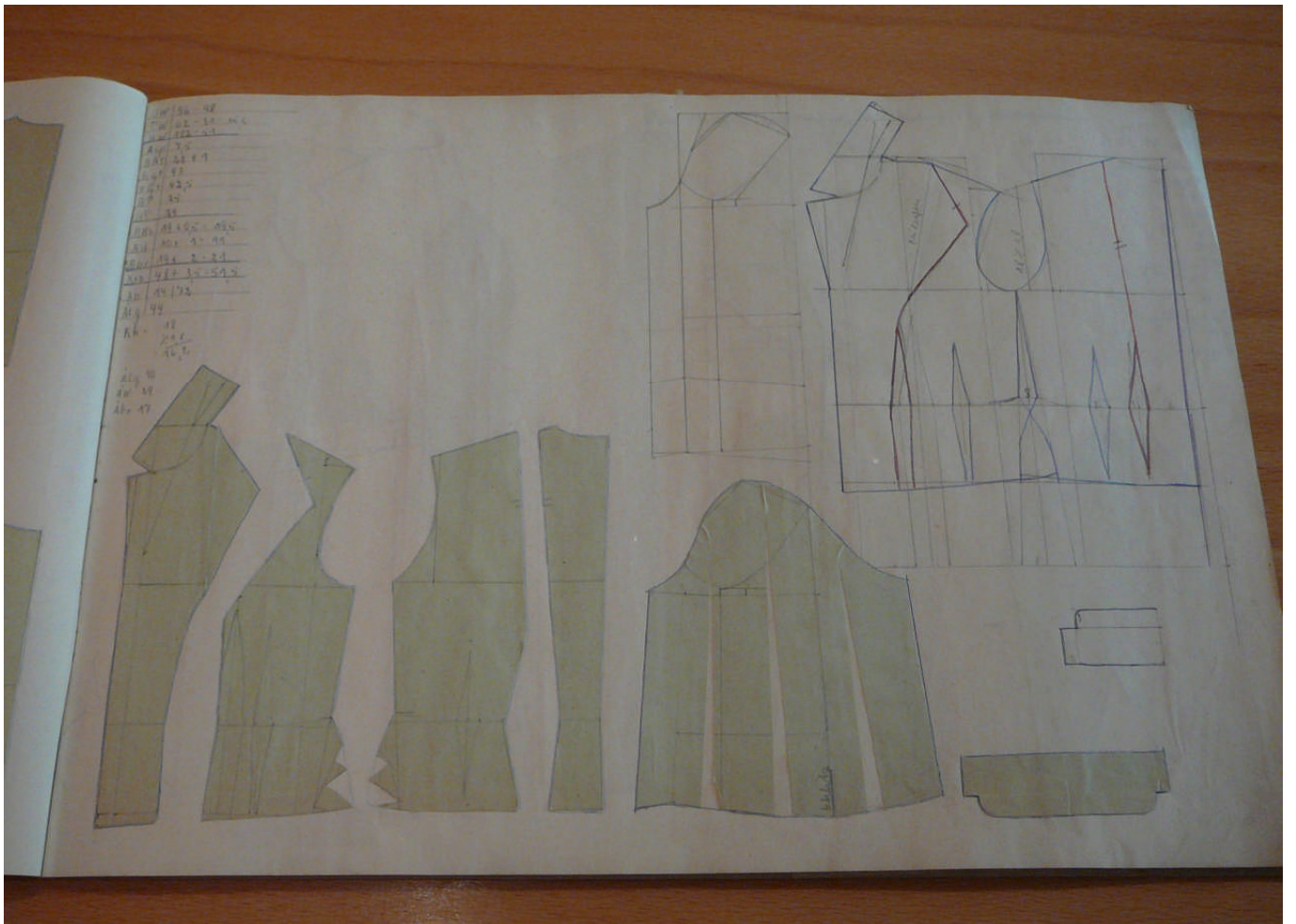
Vordere Mitte	Milieu du devant	frontdeel
Mitte rückwärts	Milieu du dos	ruggedeelte
Im Bug — Stoffbruch	Dans le pli	In de plooi
Einkanten	Faire boire	Inhouden
Einreihen	Froncer	knijgen
Umbiegen — Umbruch	Plier	omslaan
Falte	Pli	plooi
Ausdehnen	Entendre	uitbreiden
Verlangern auf	Allonger de	verlengentot
In Fatten legen	Mettre en plis	In vouwen leggen



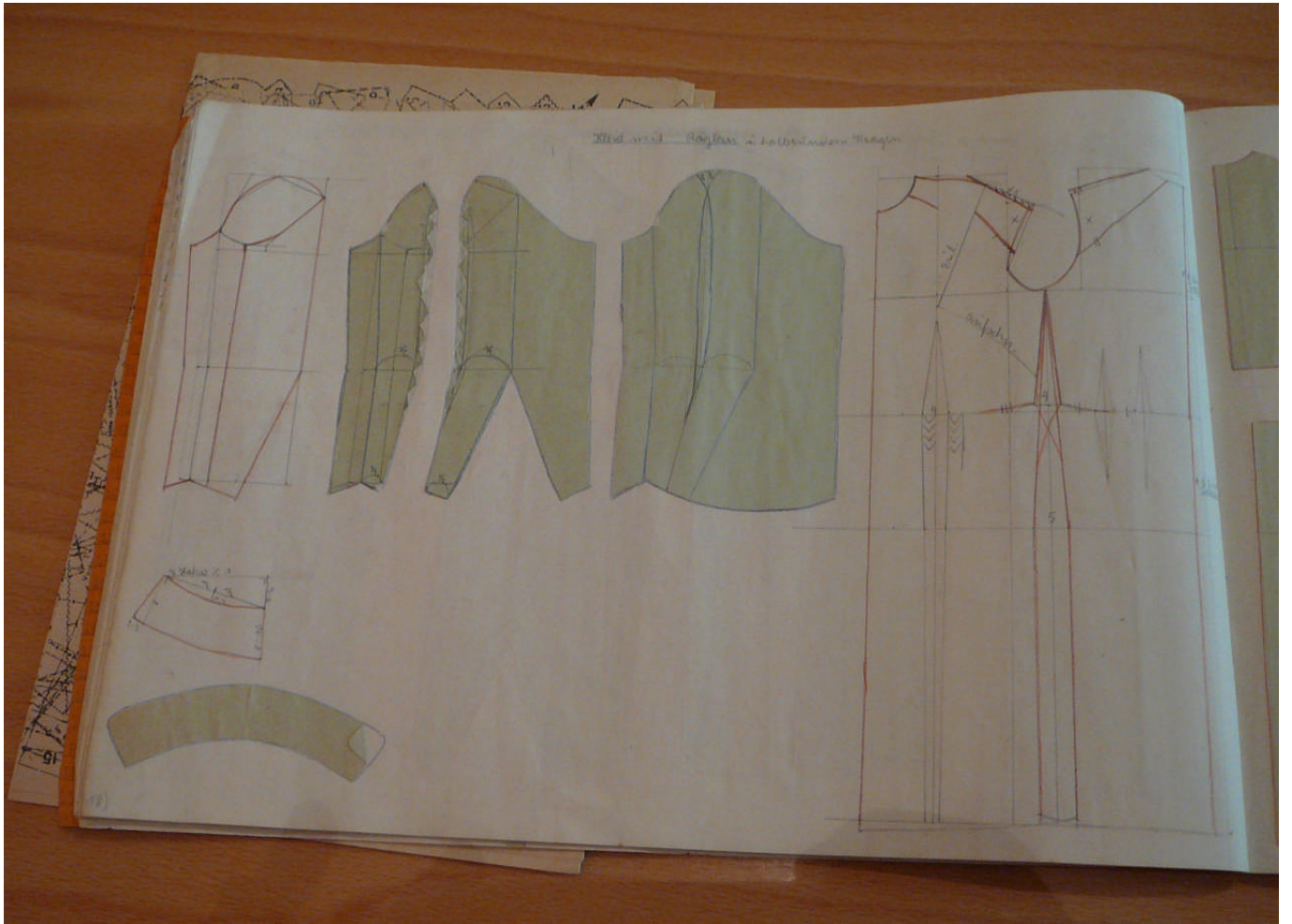




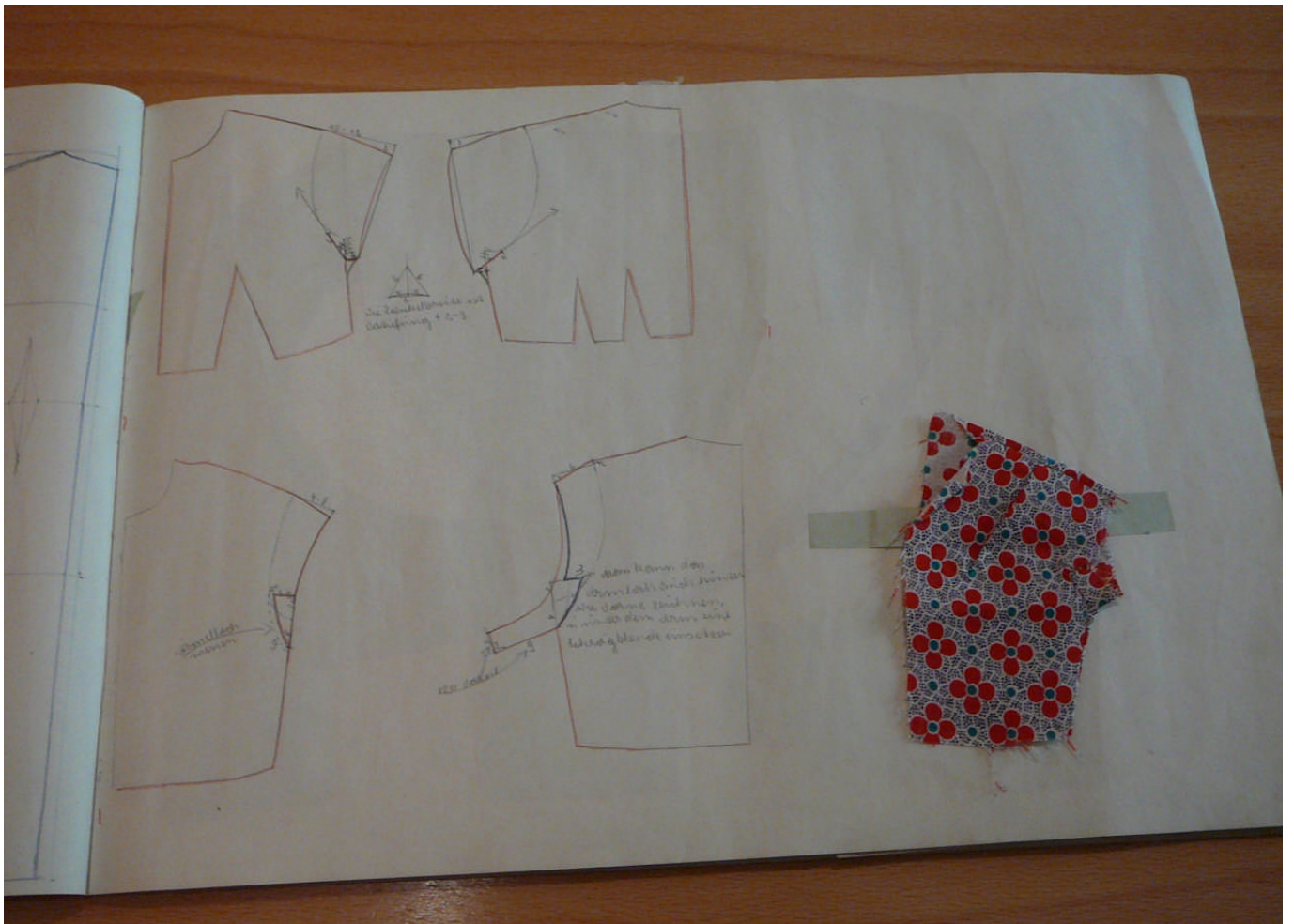
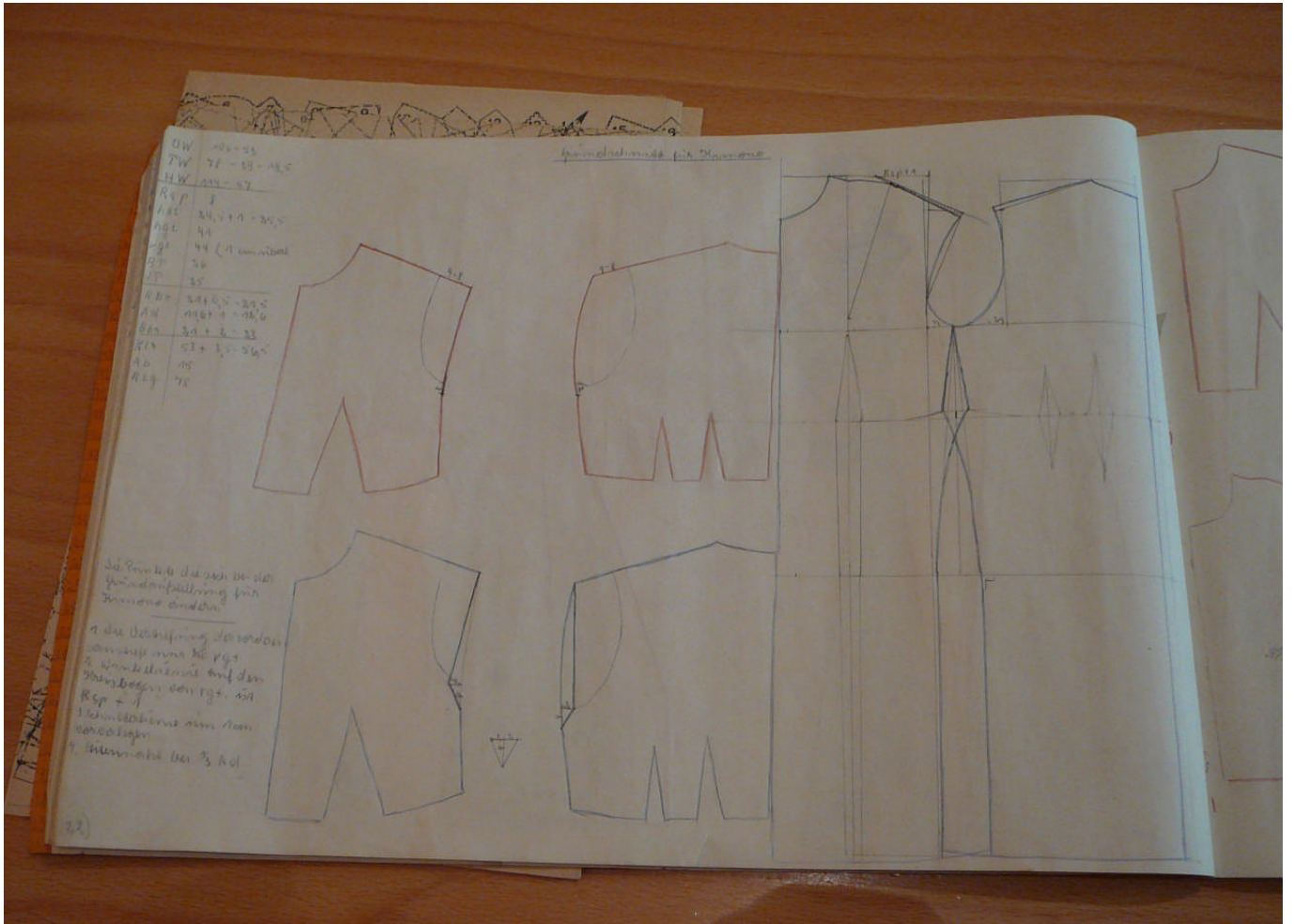


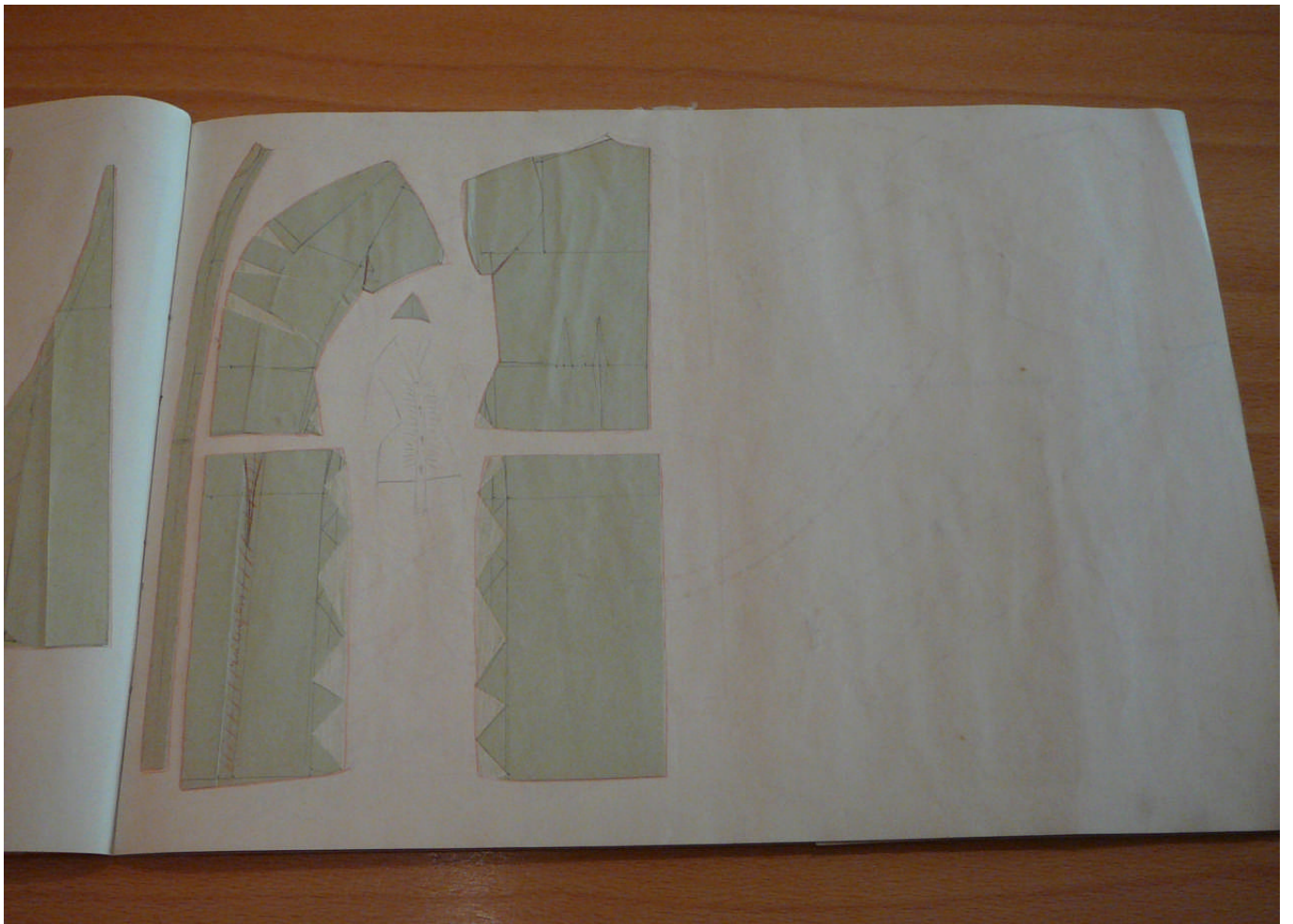
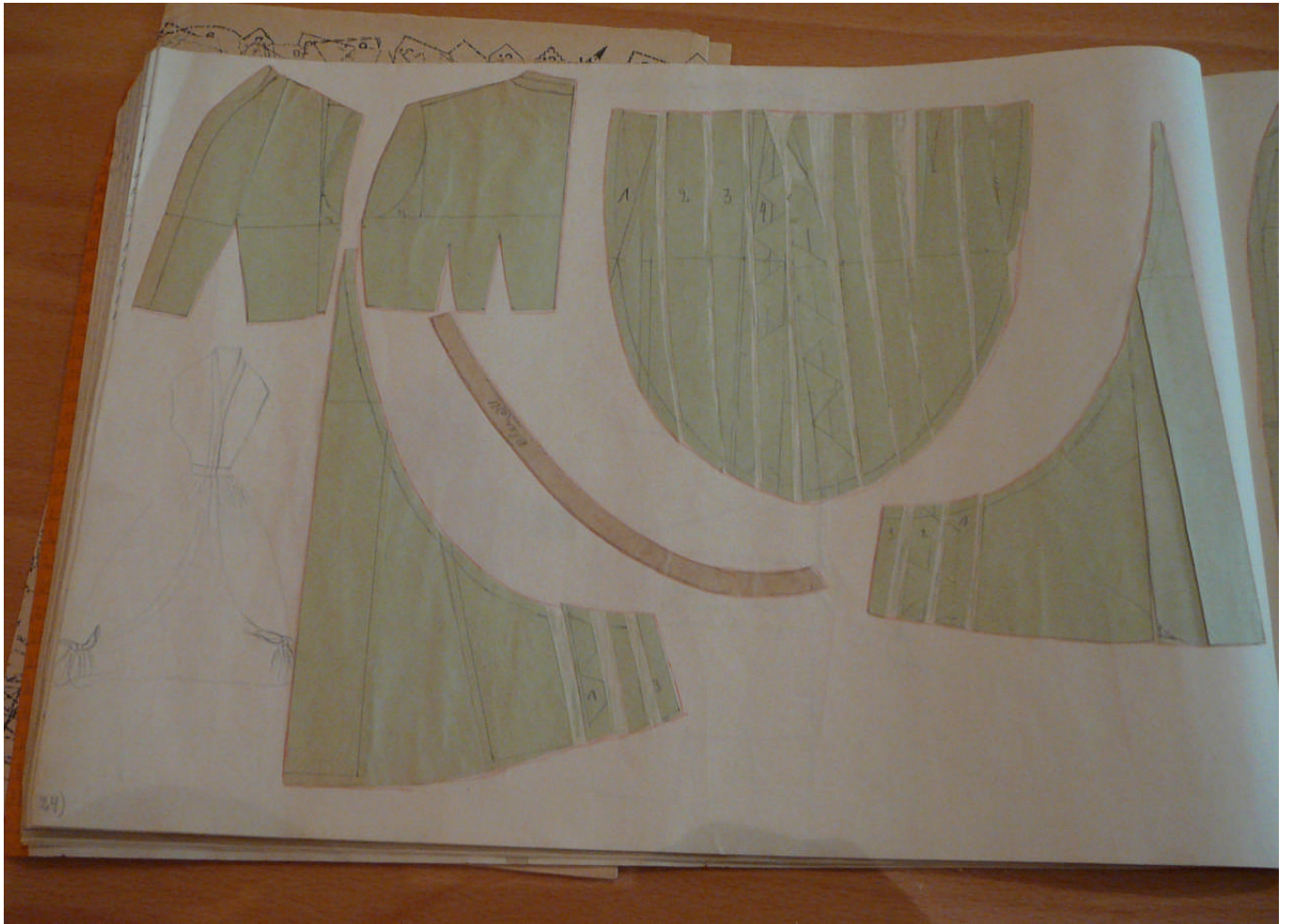


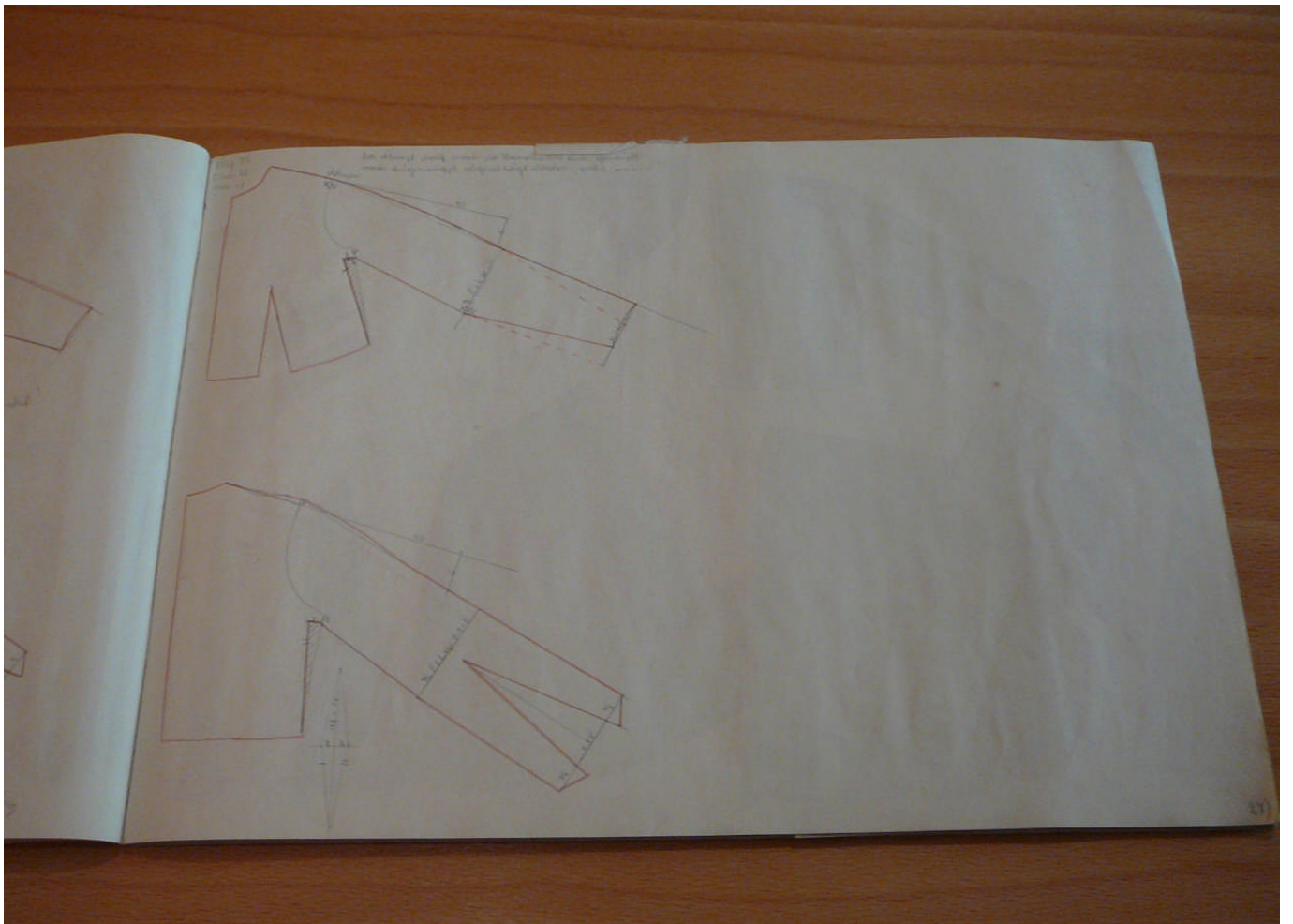
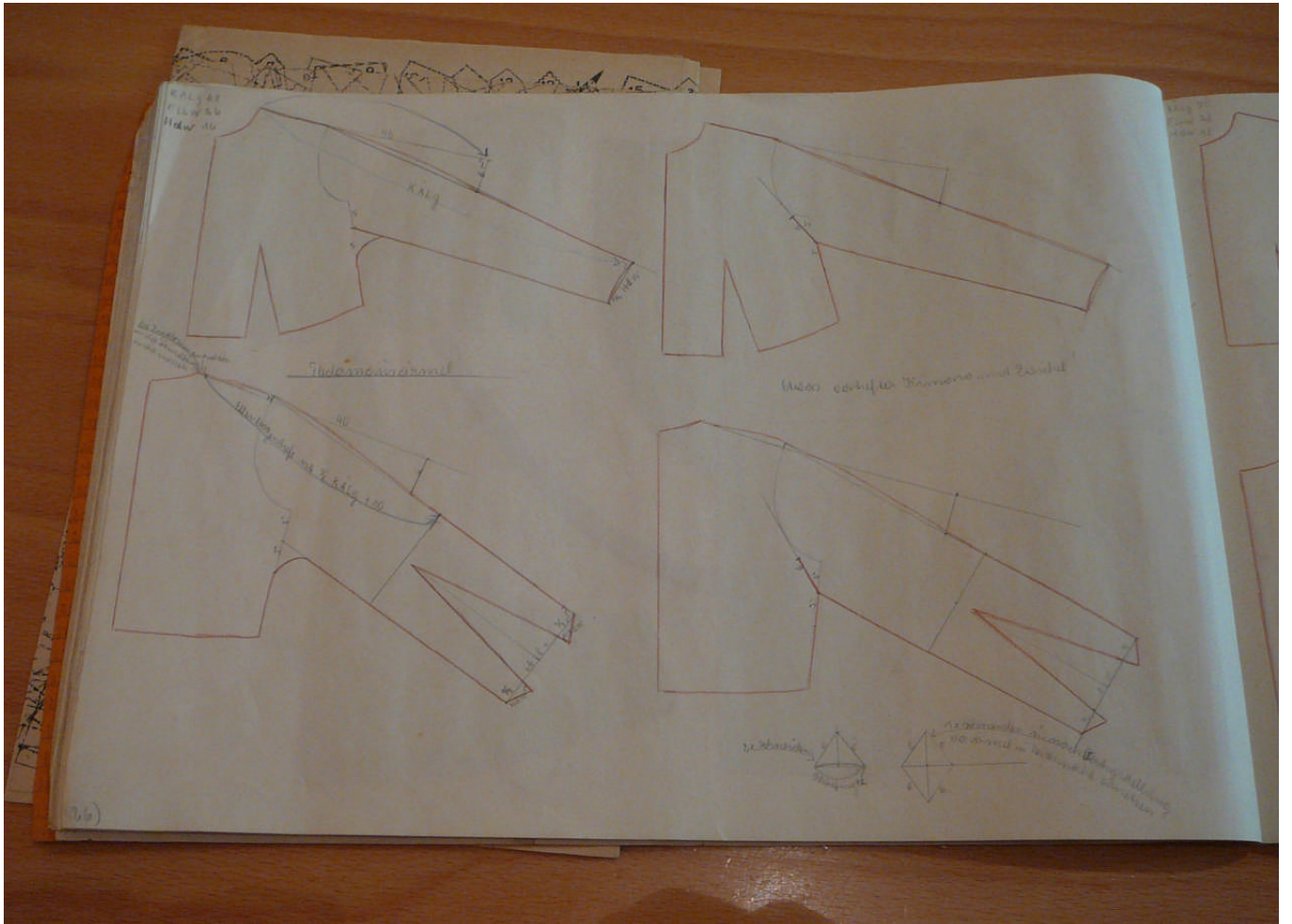




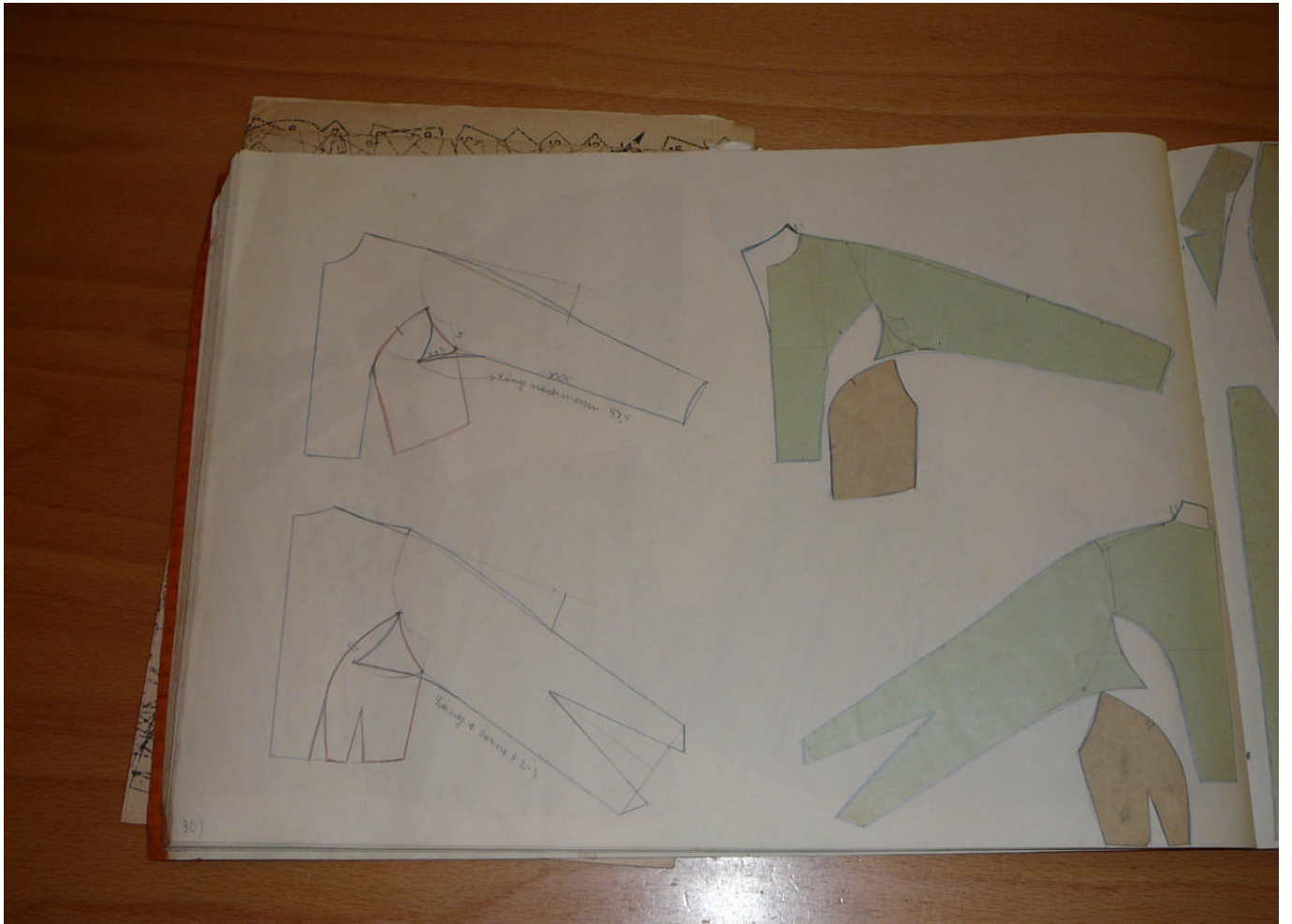


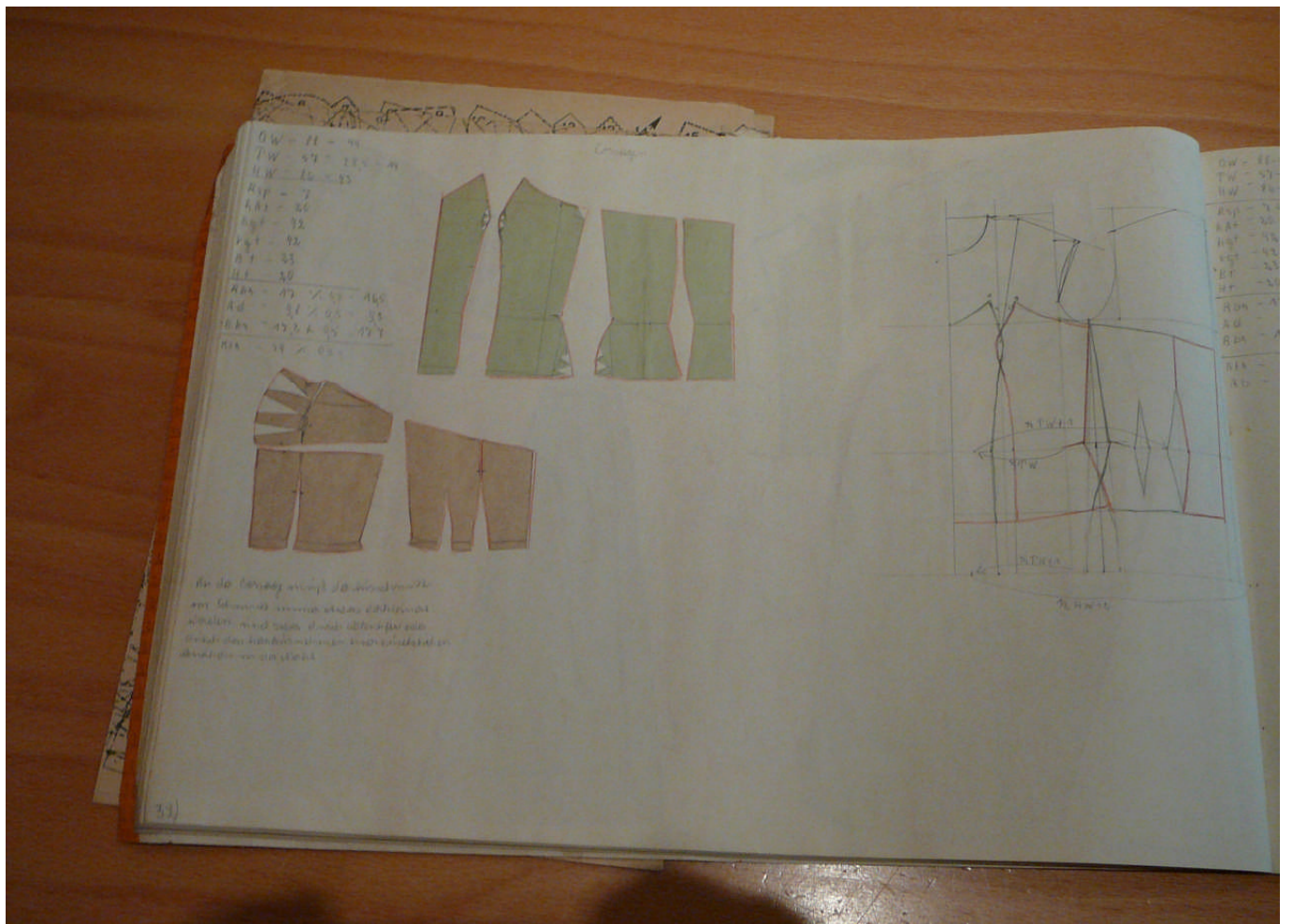
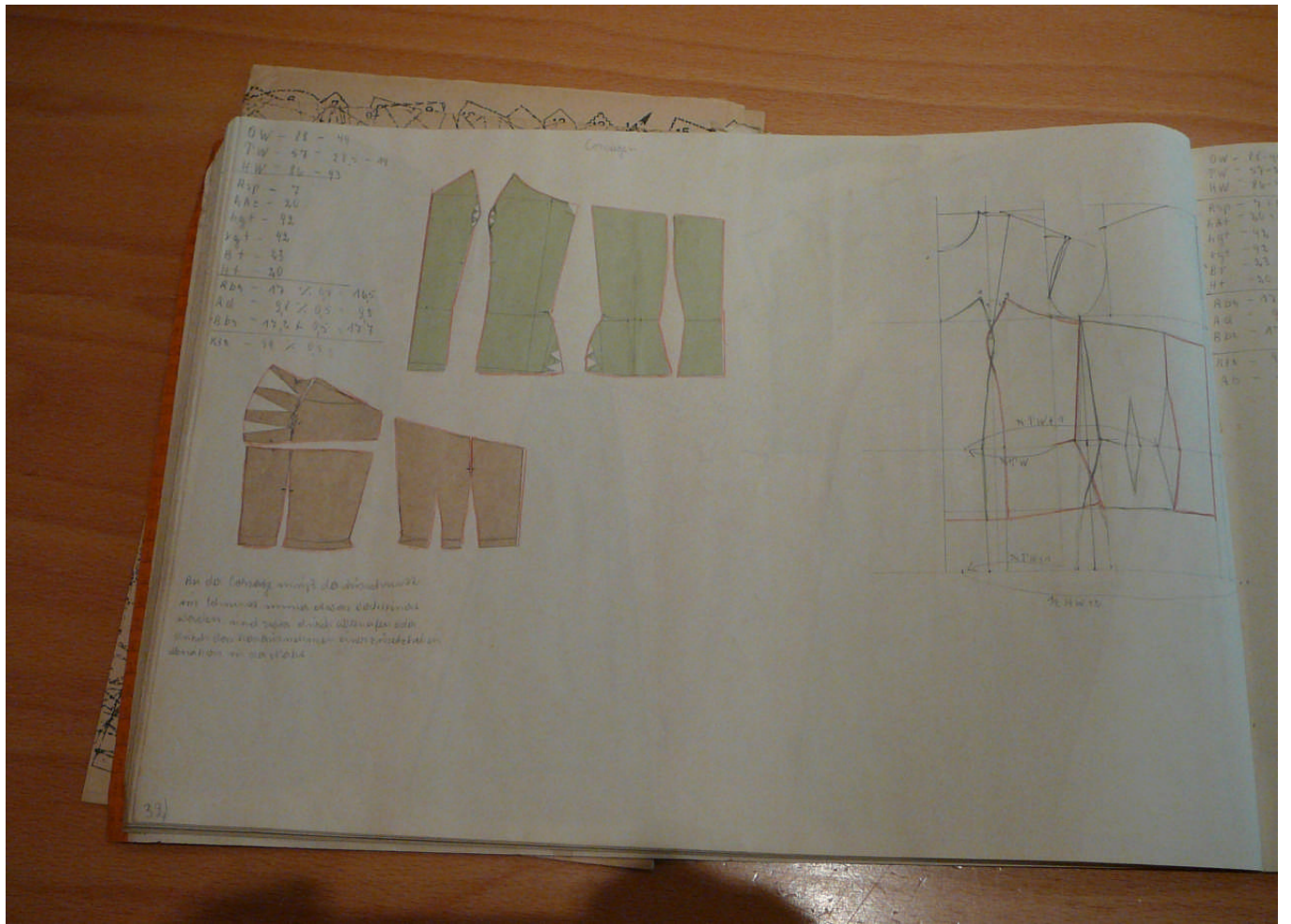




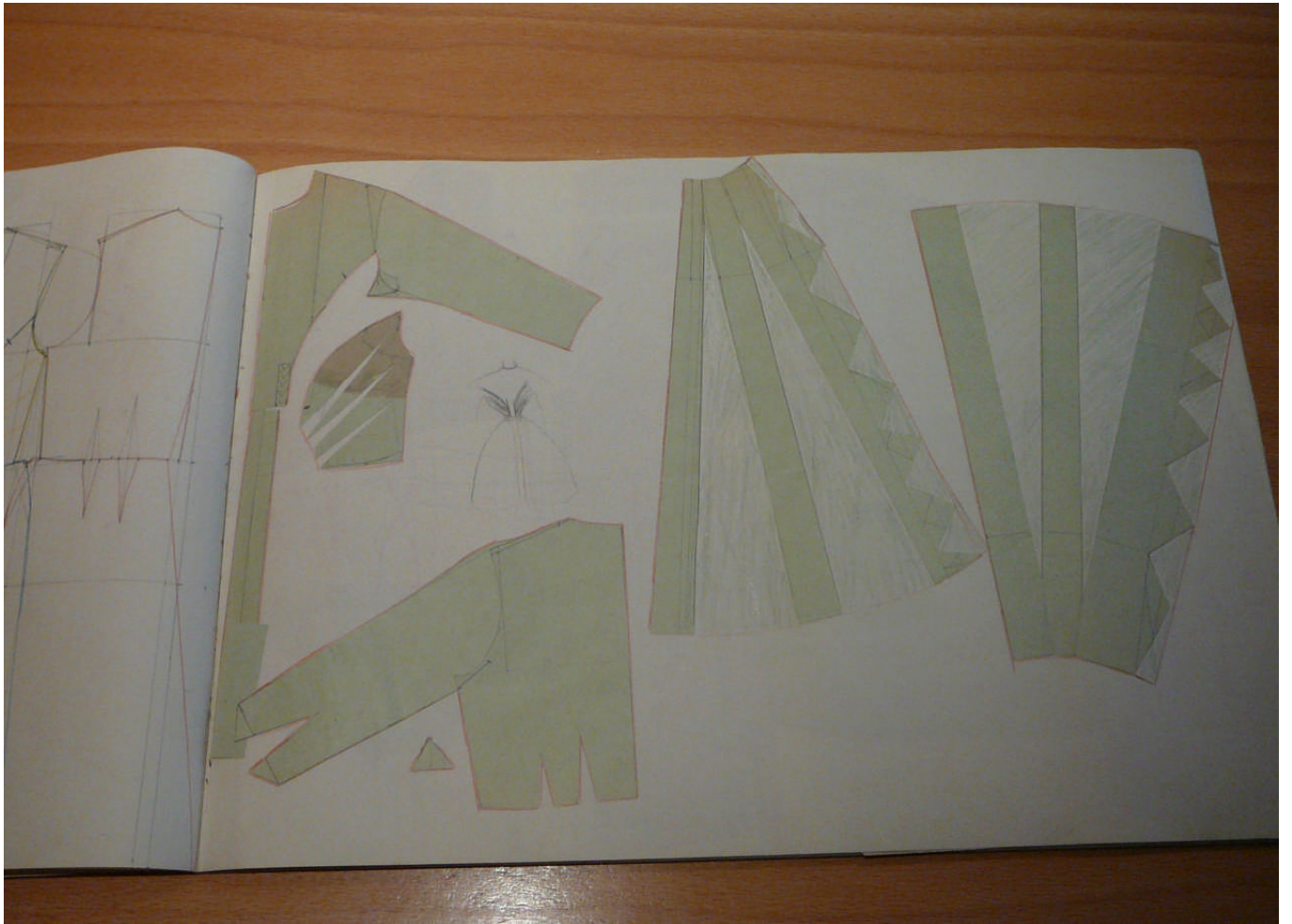


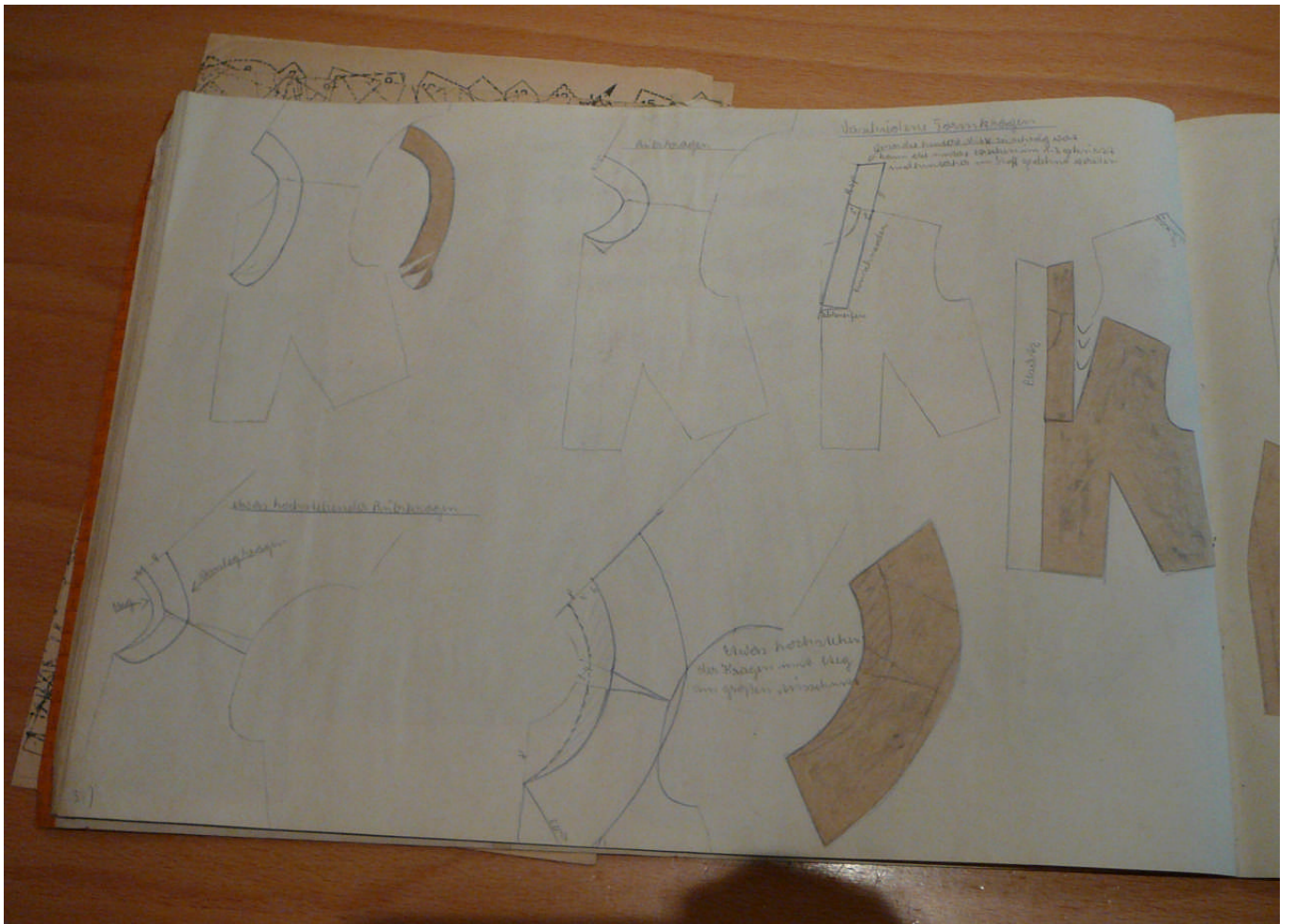
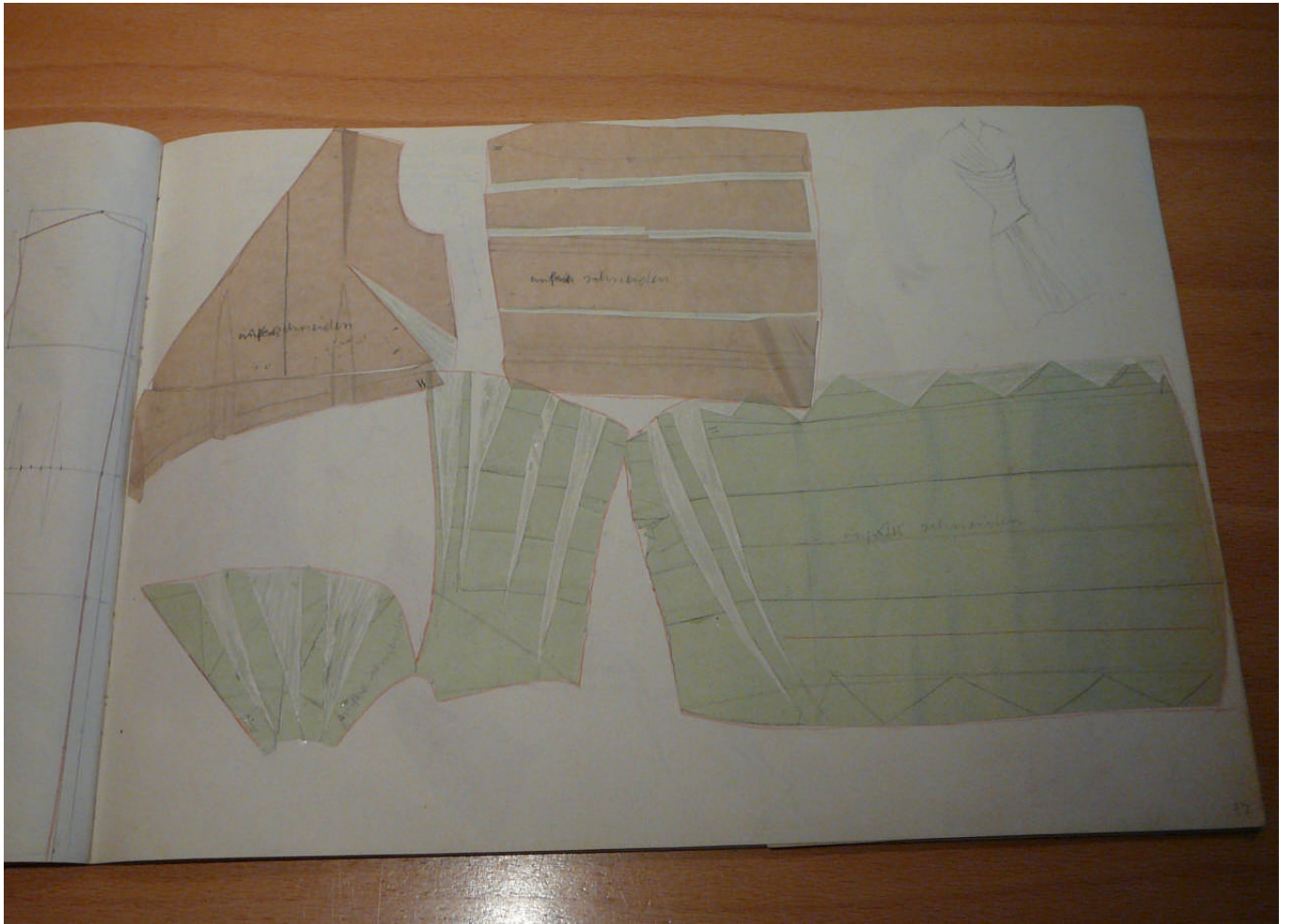


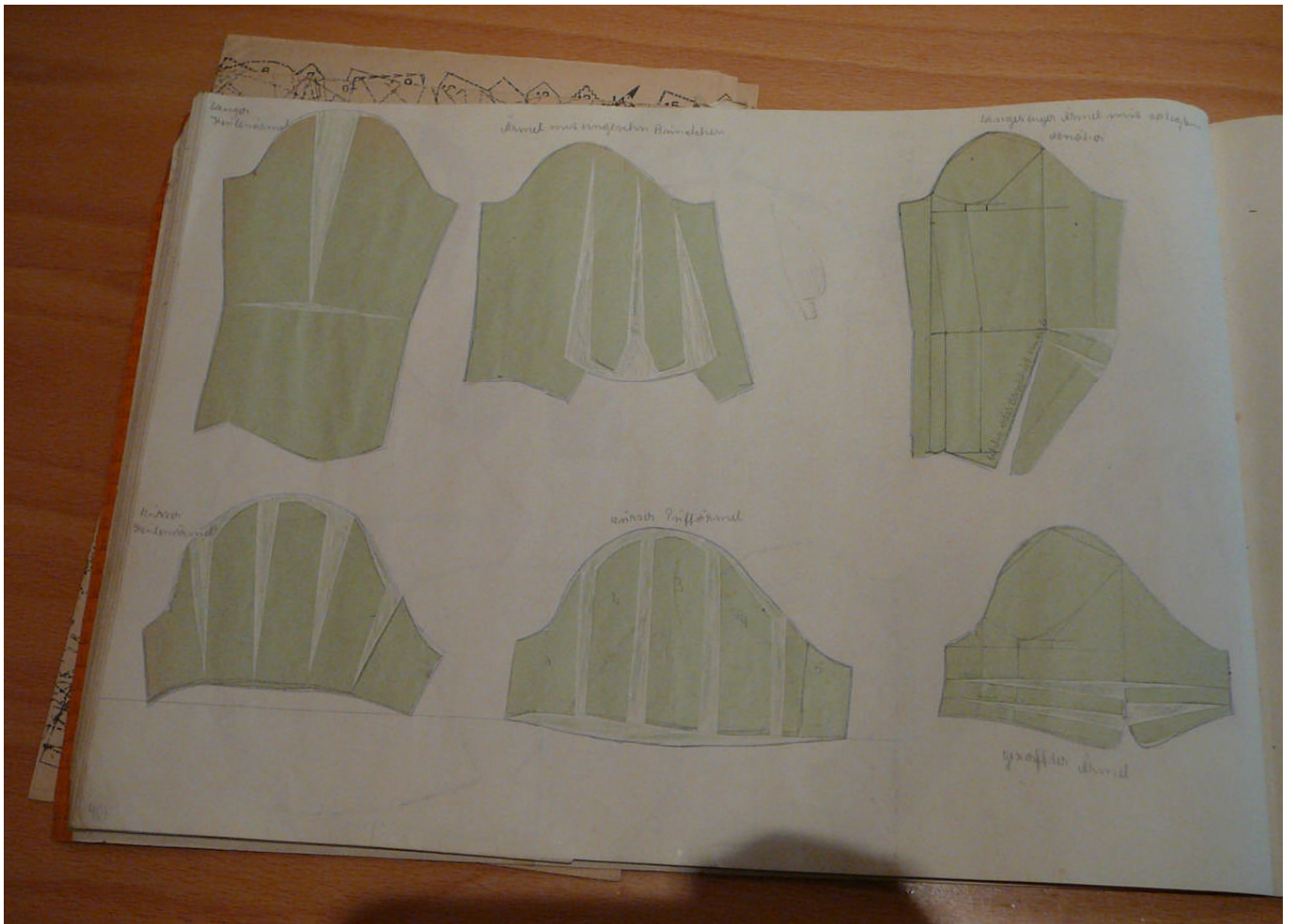






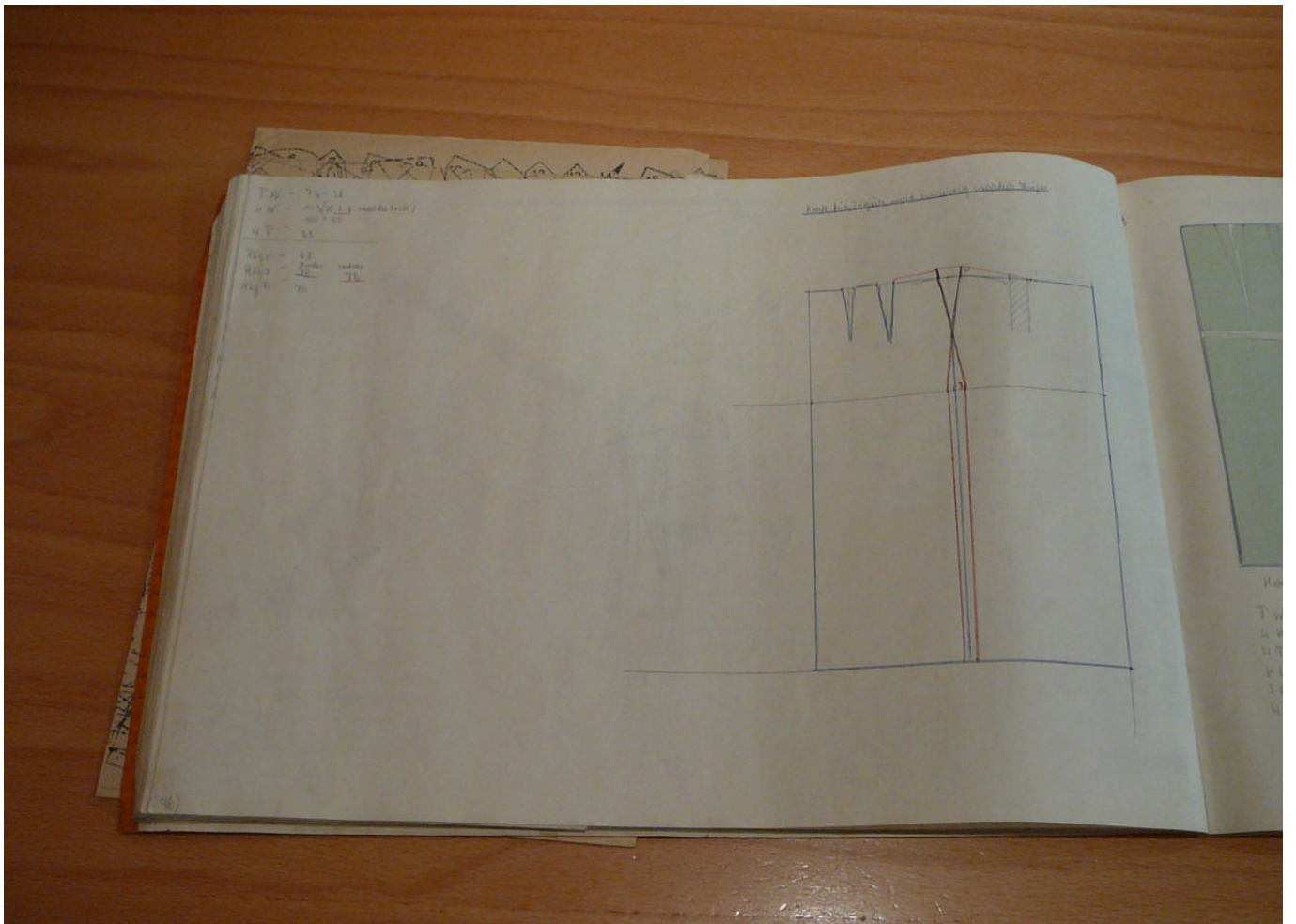
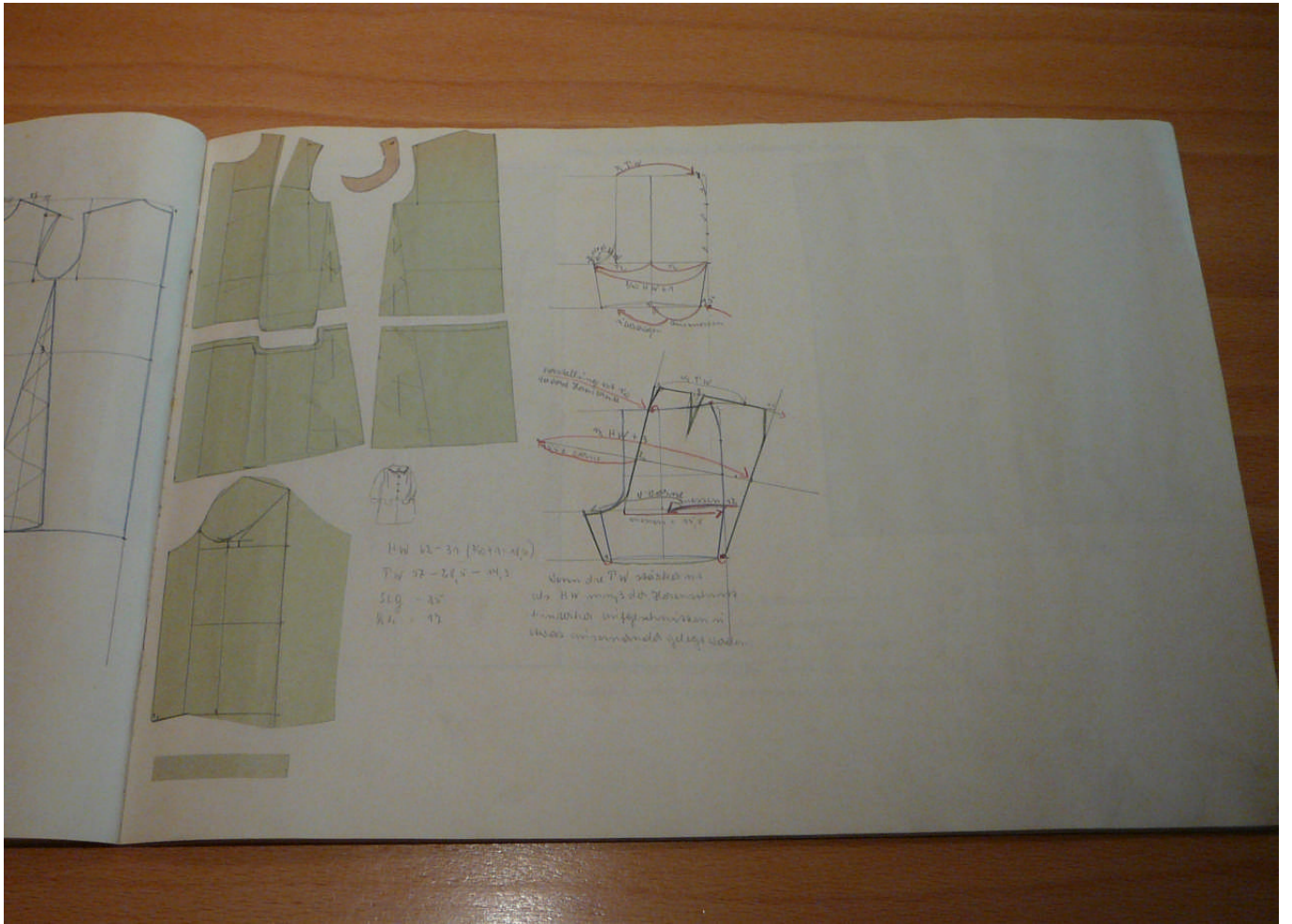


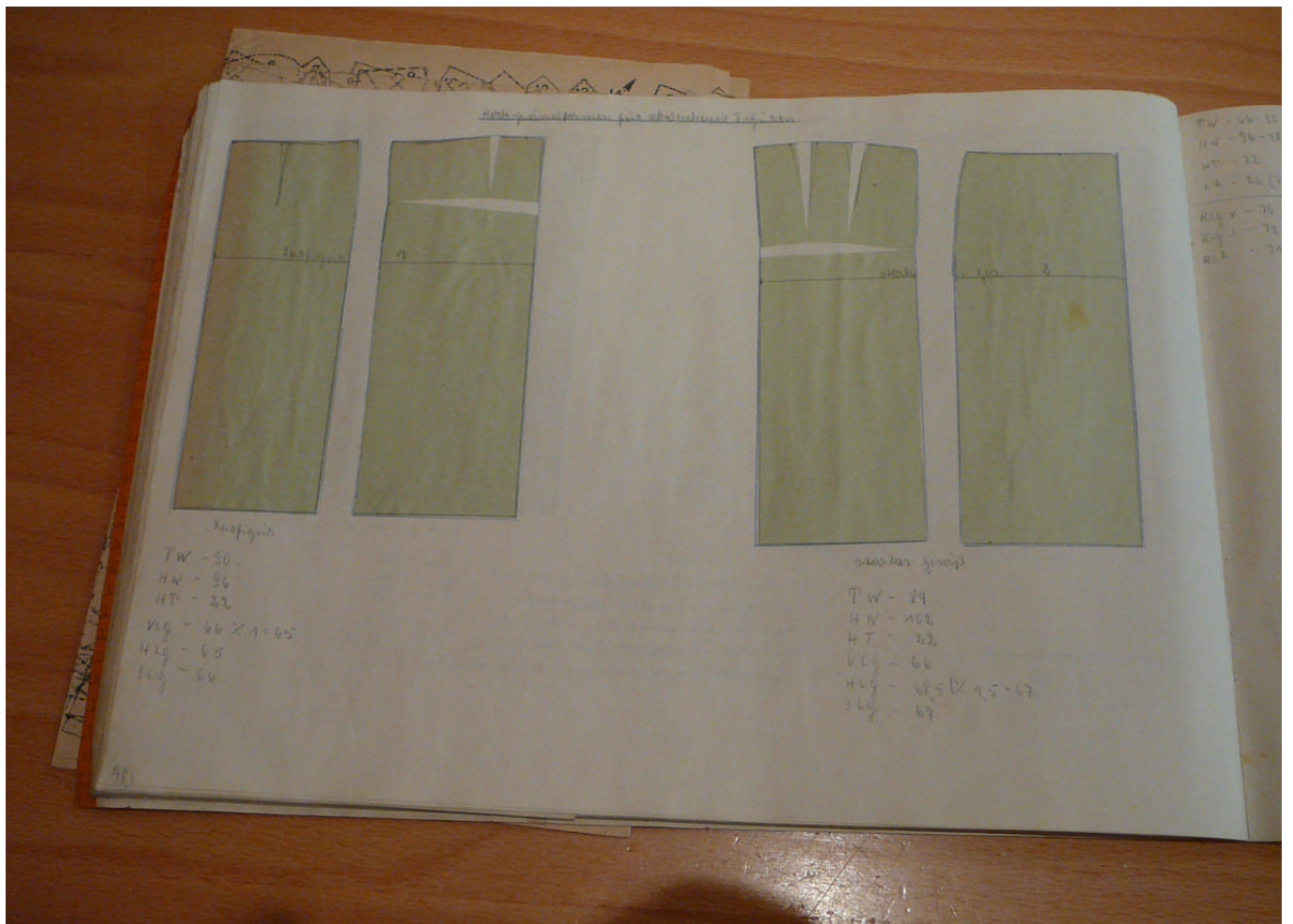
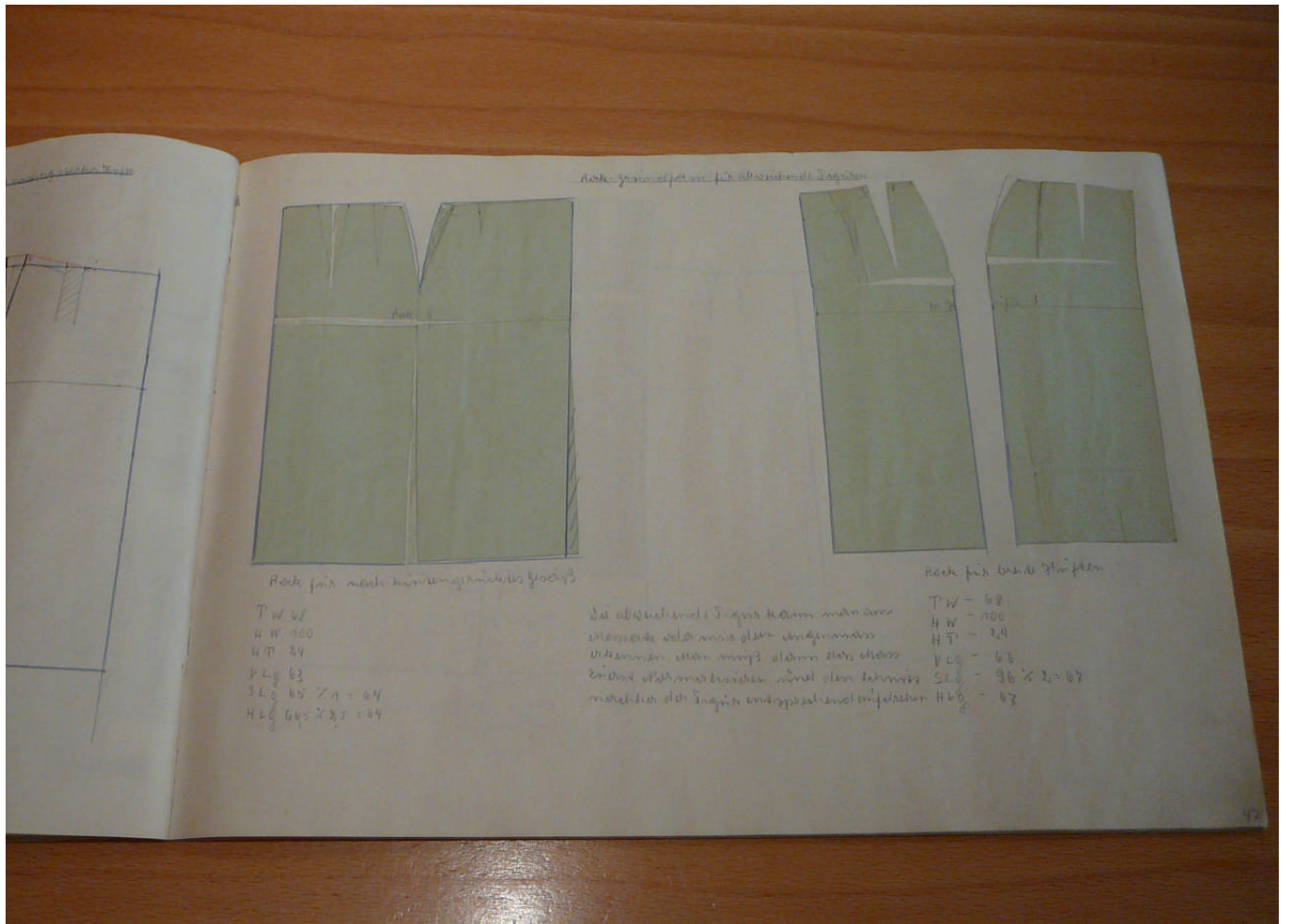


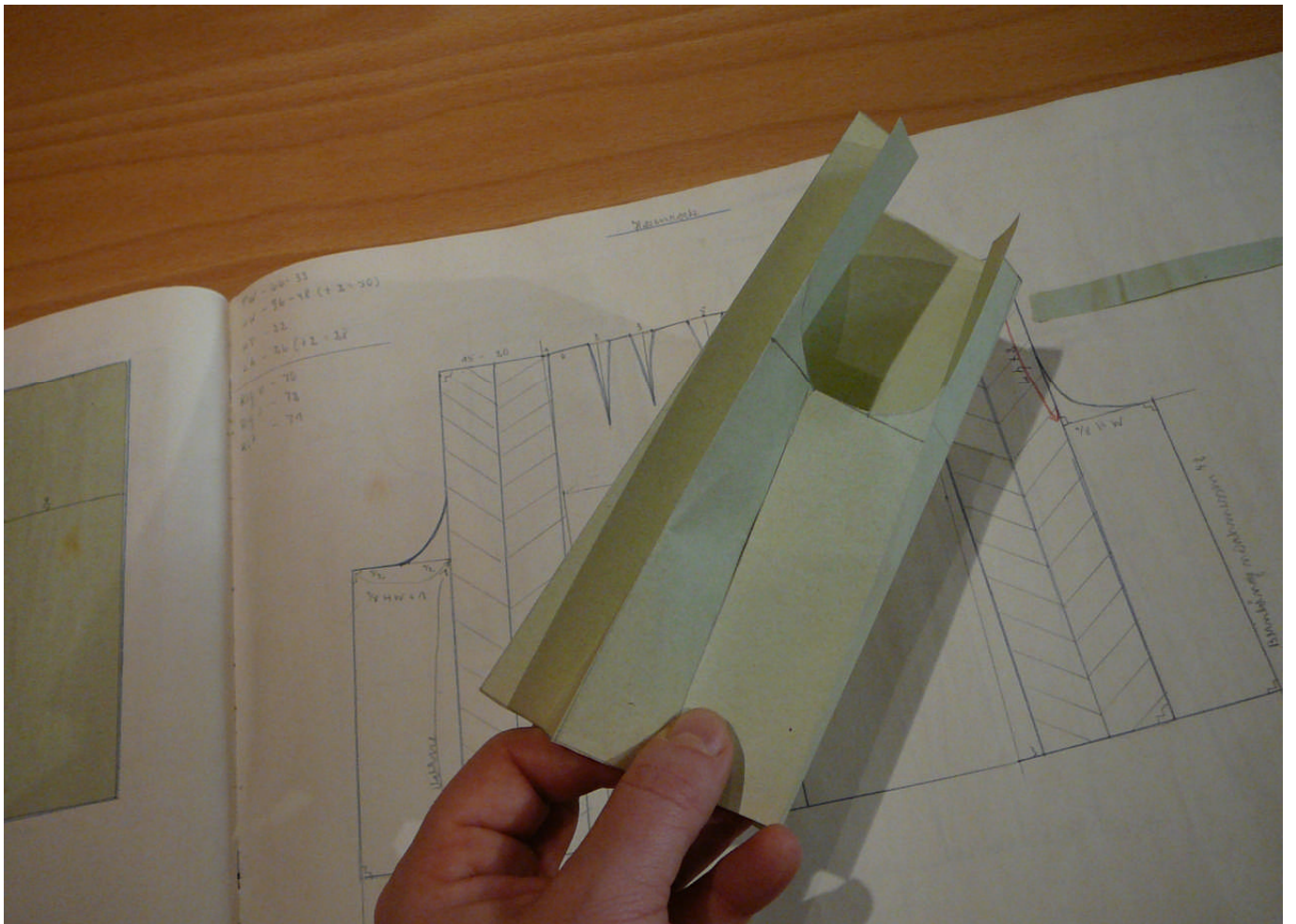
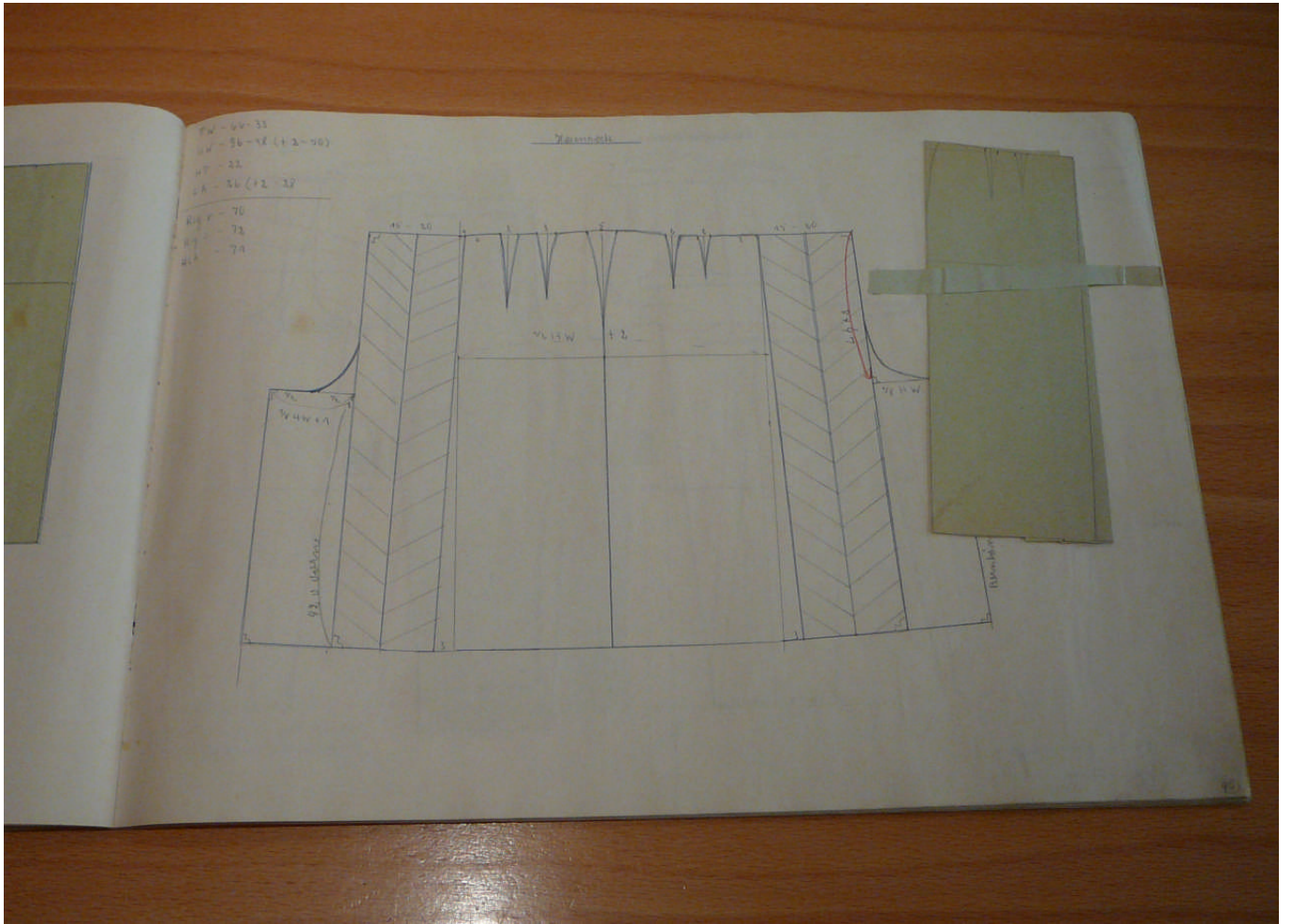


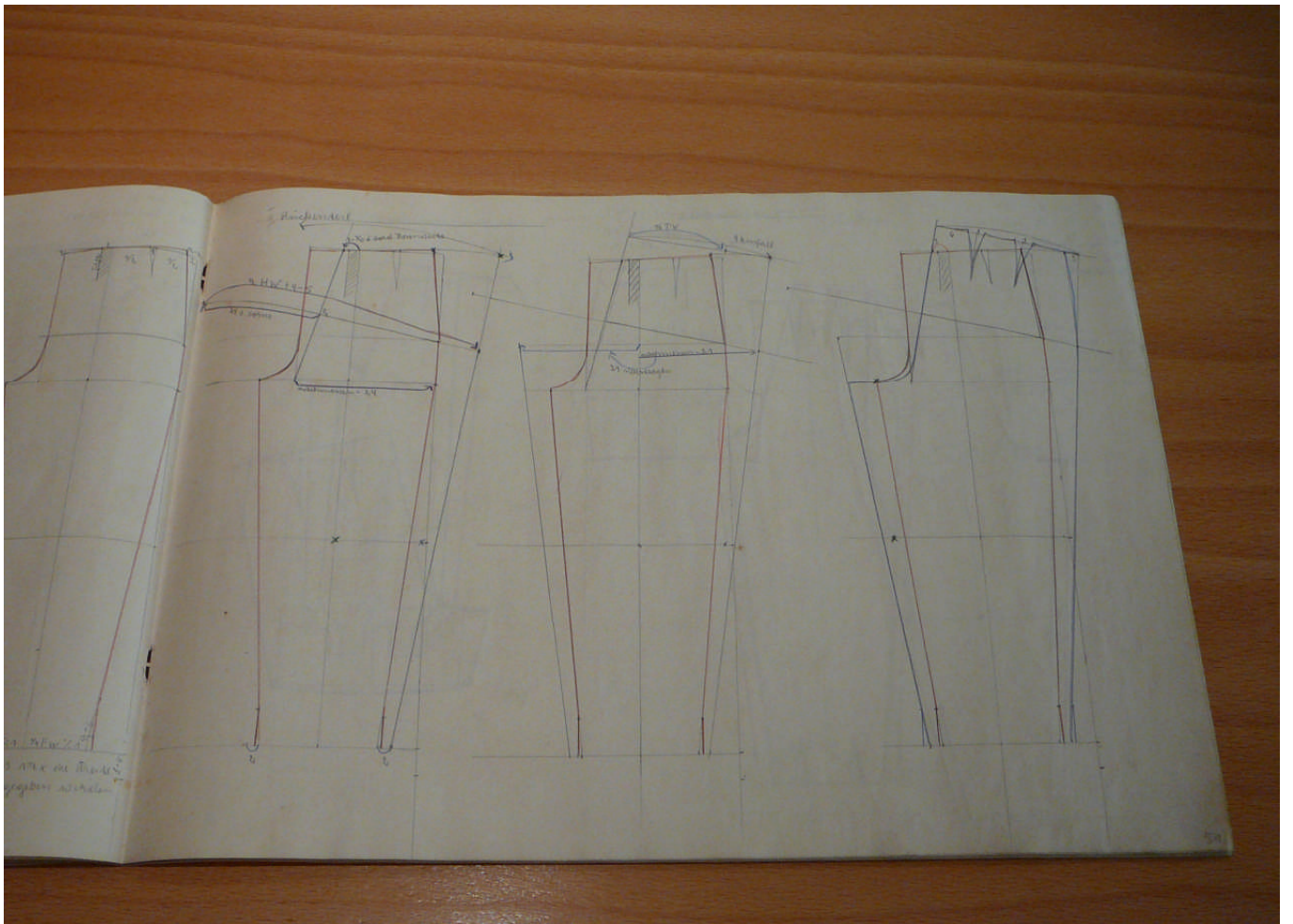
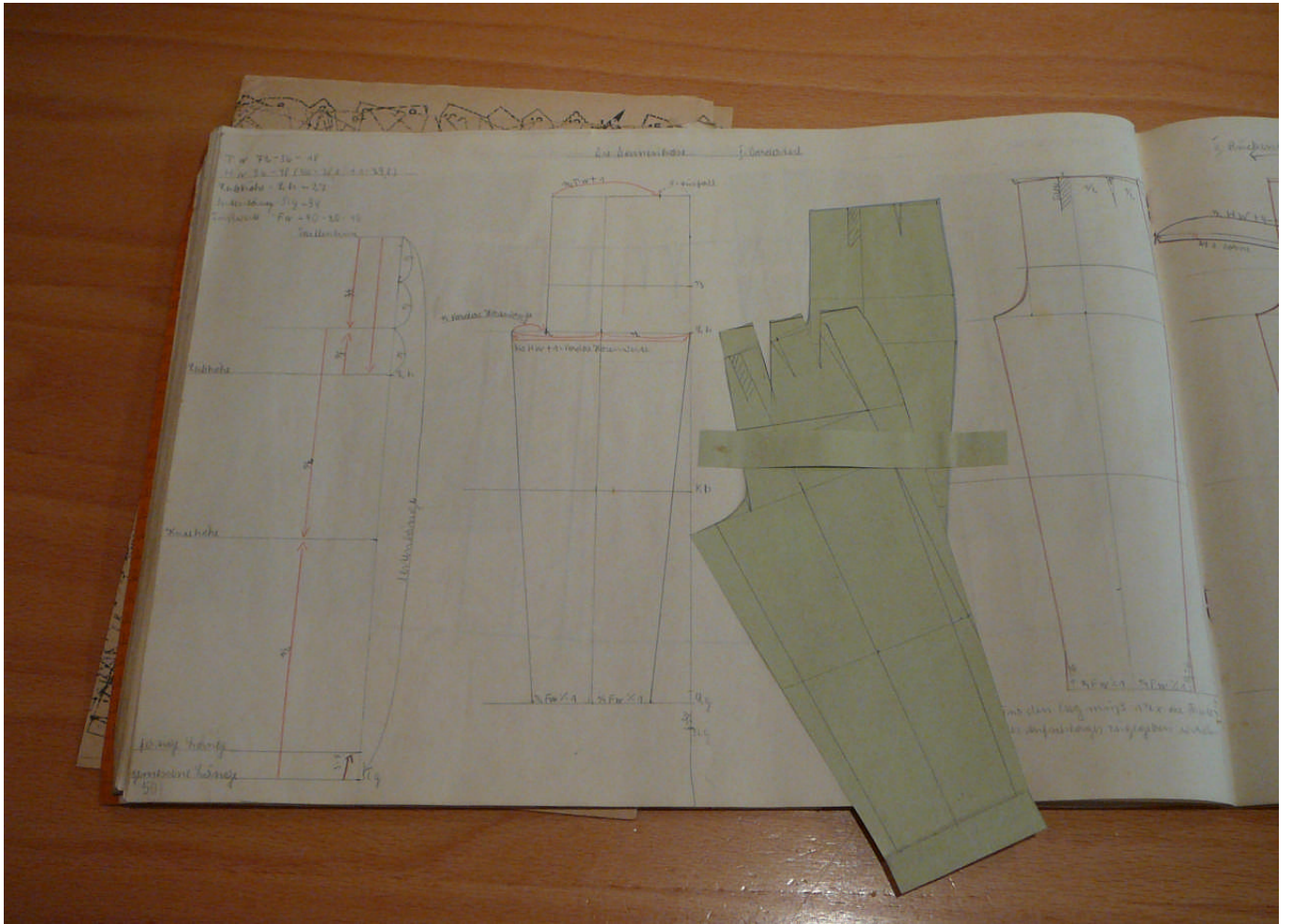


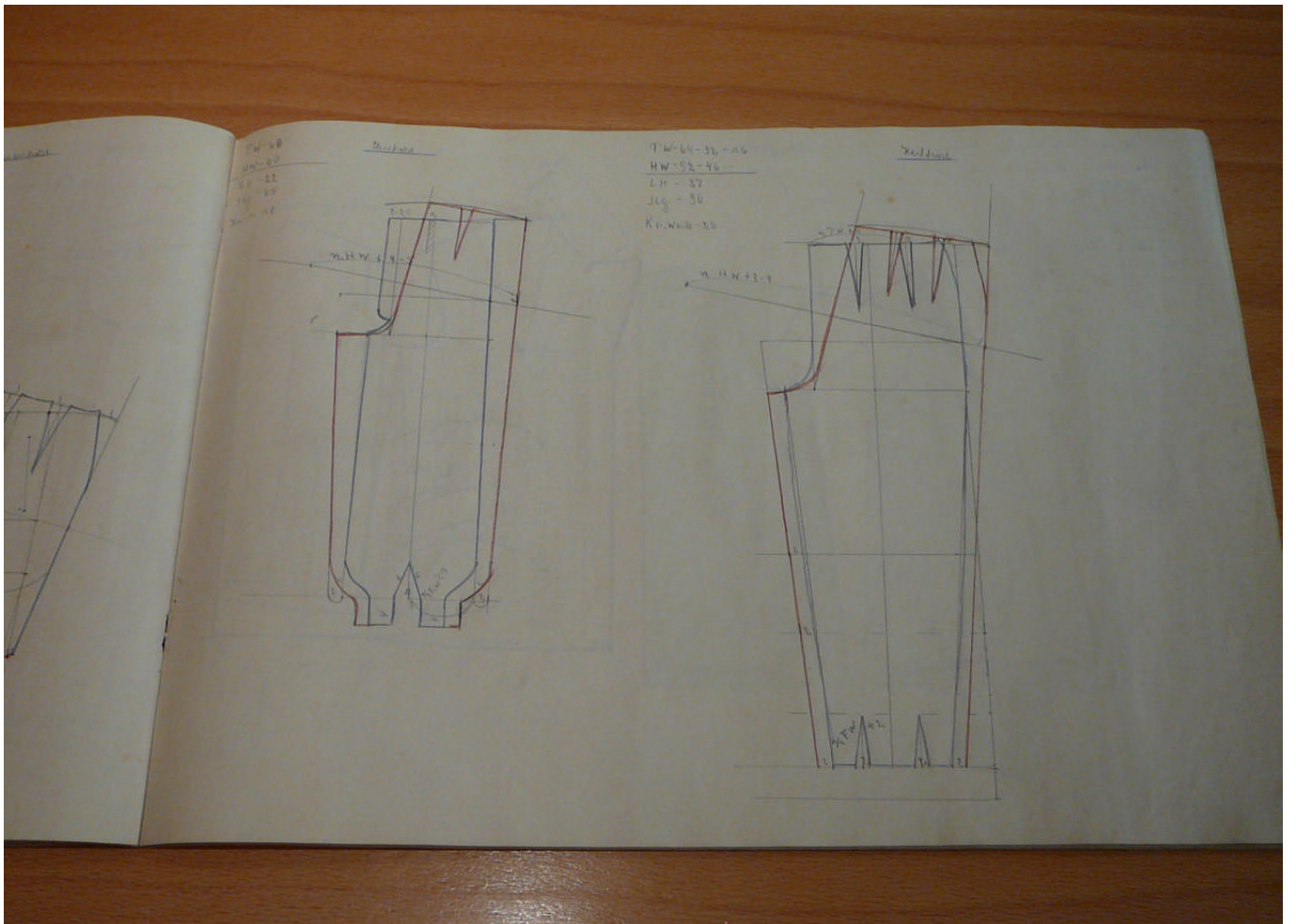
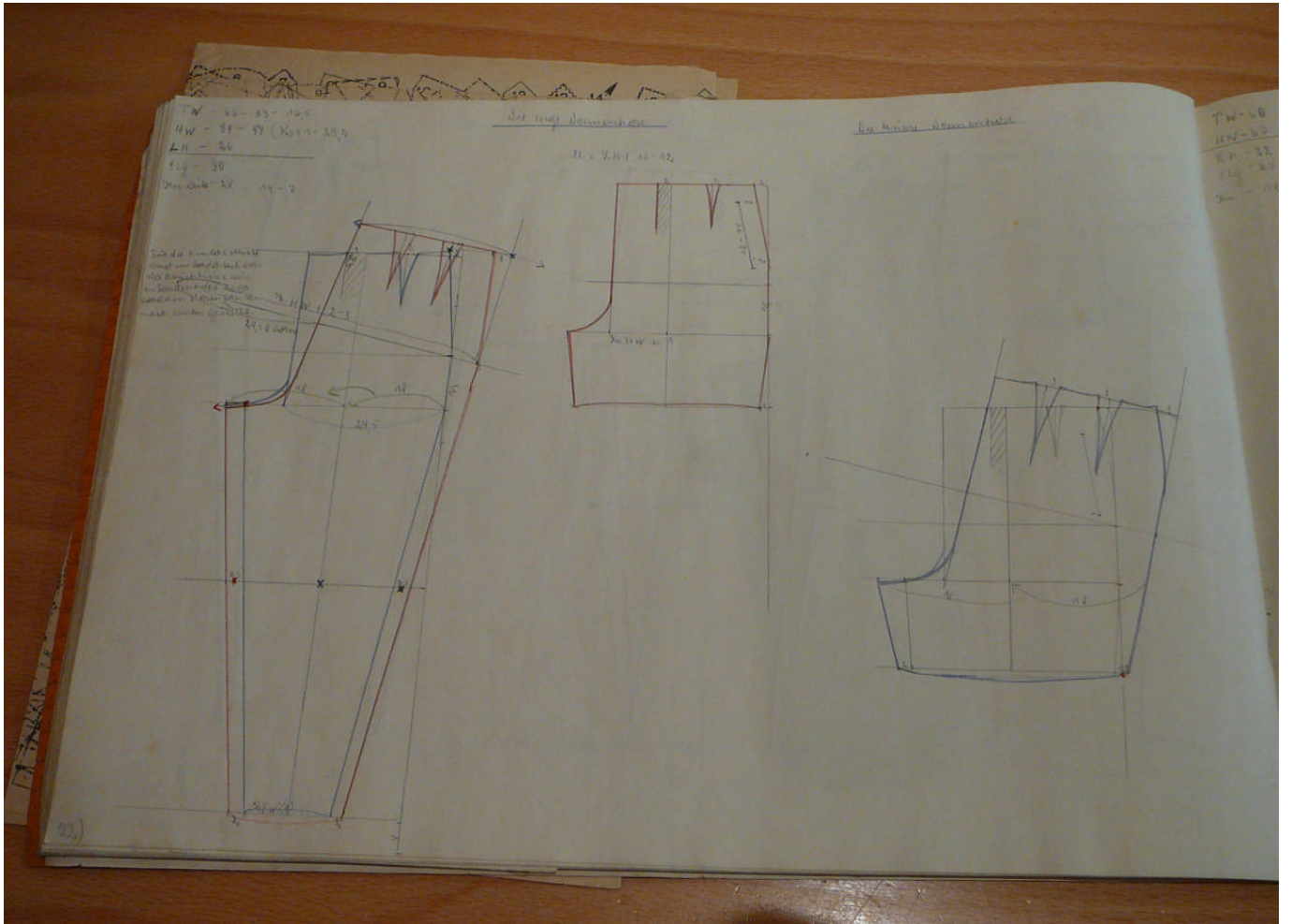


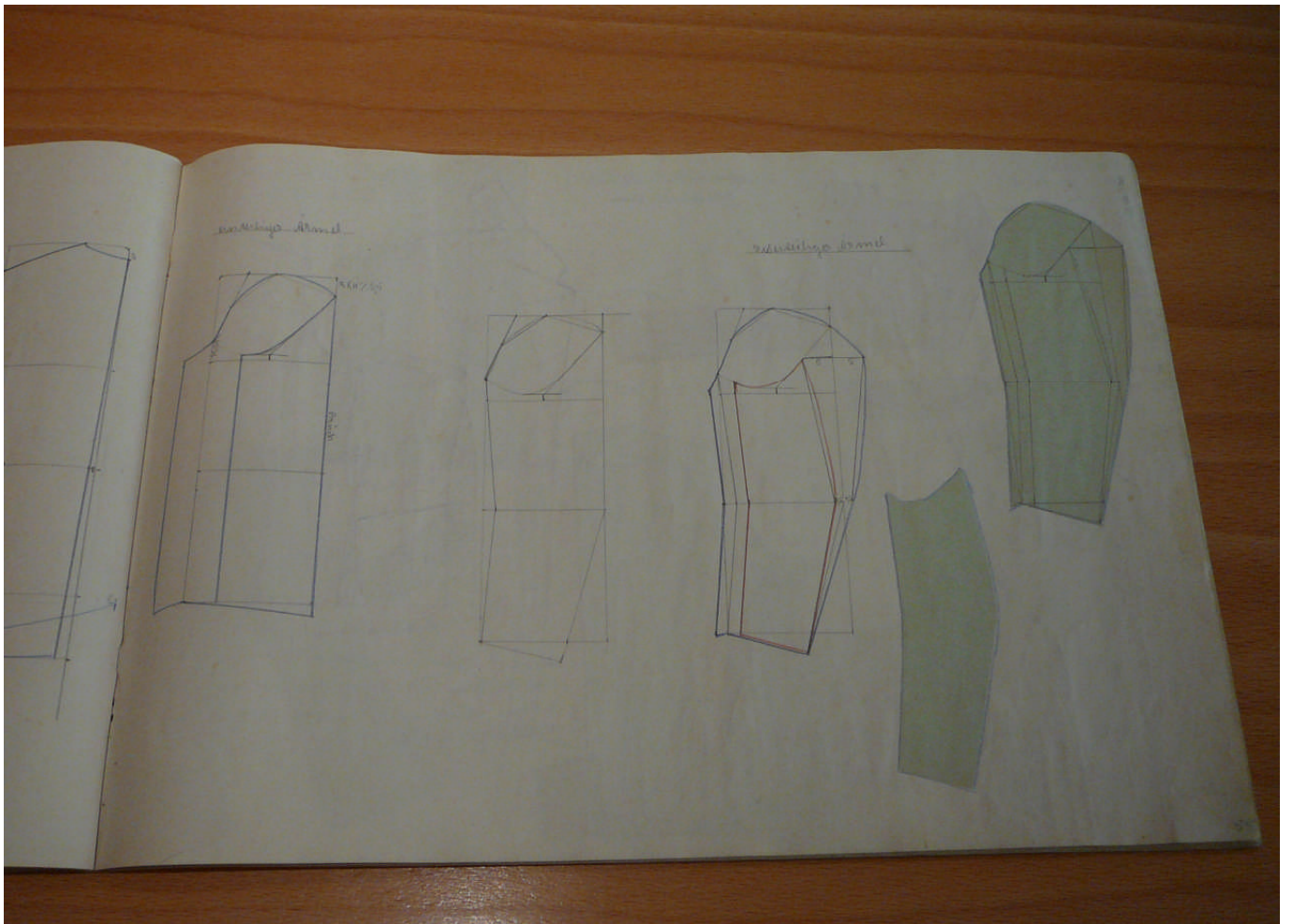
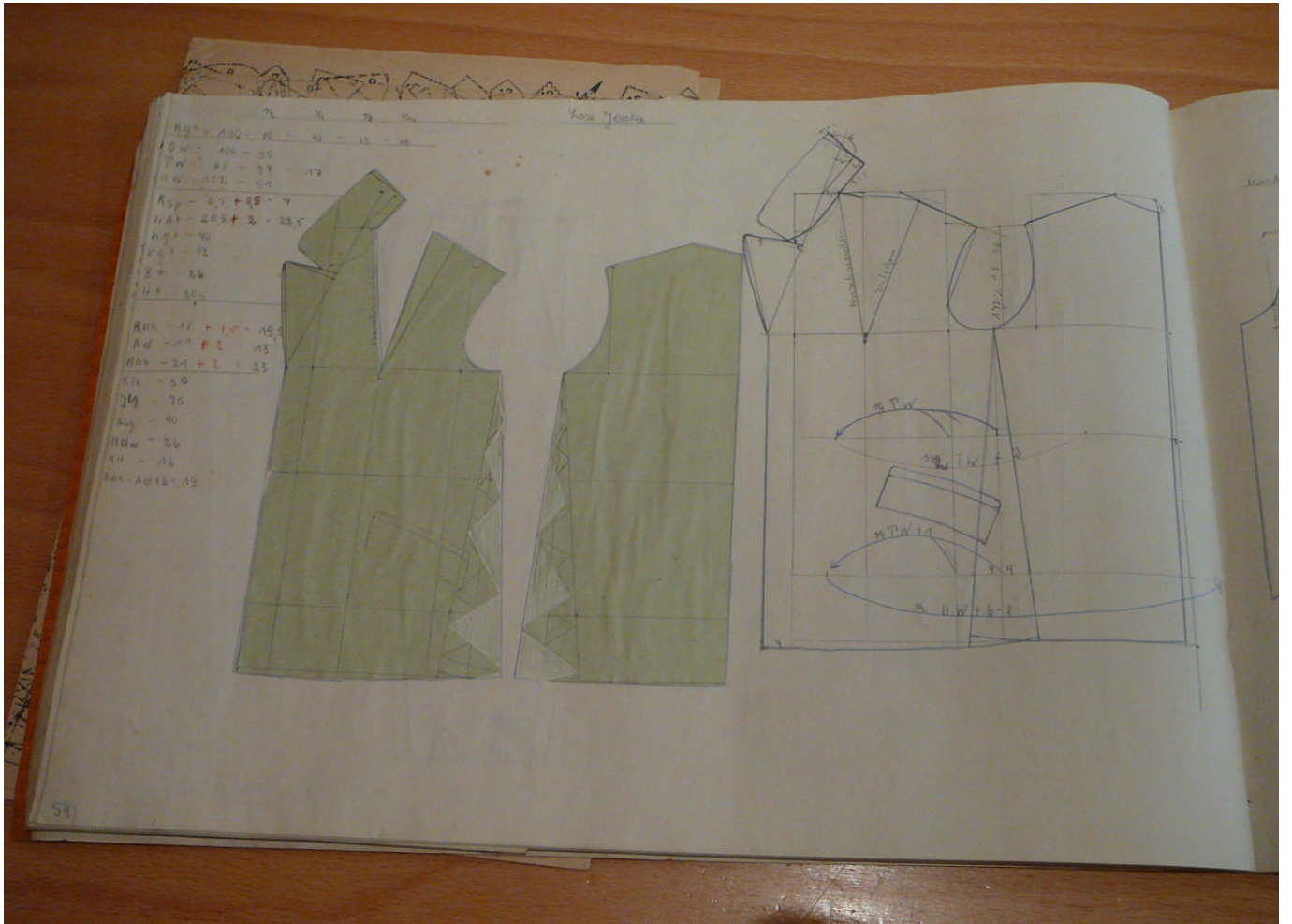


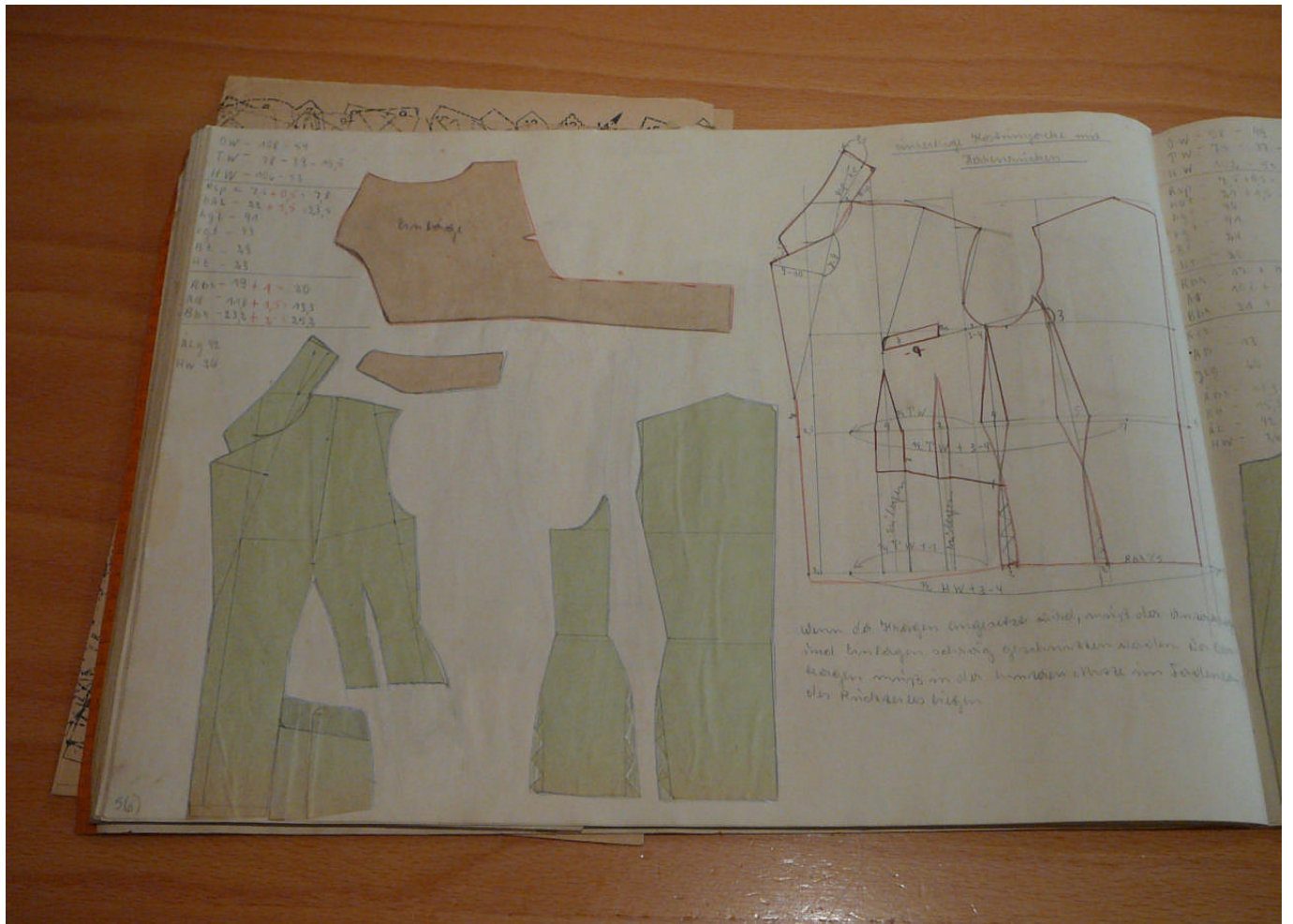






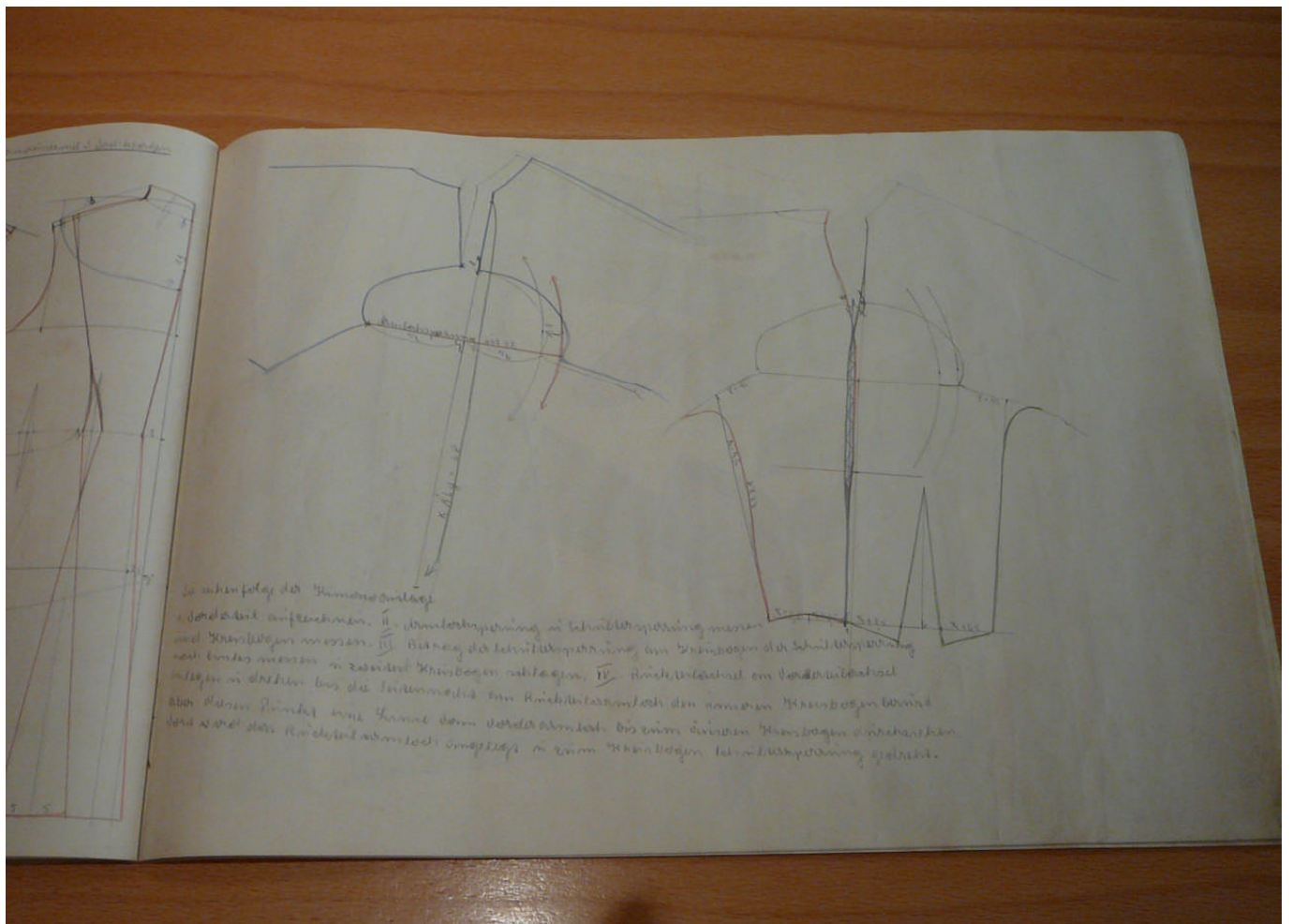


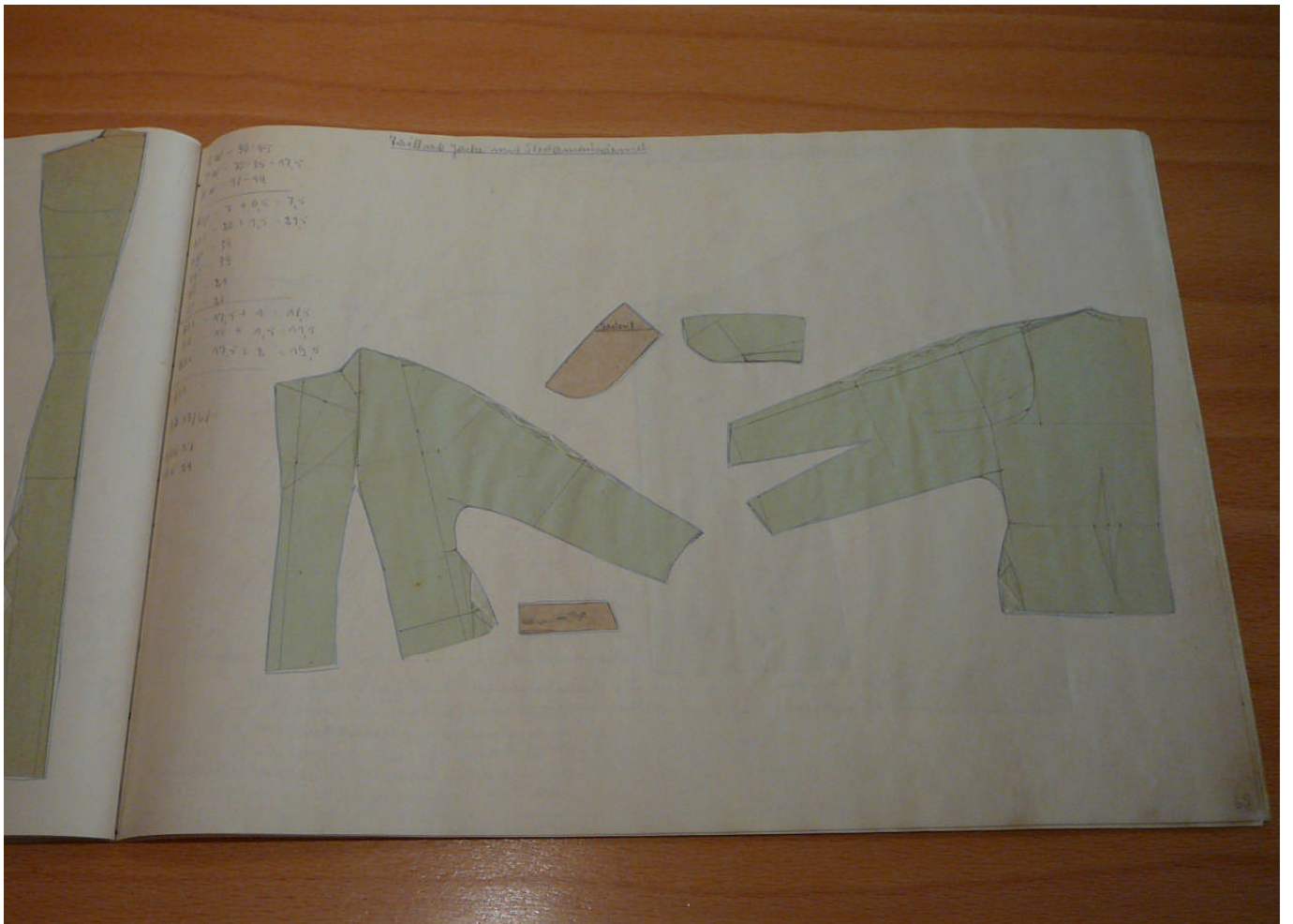




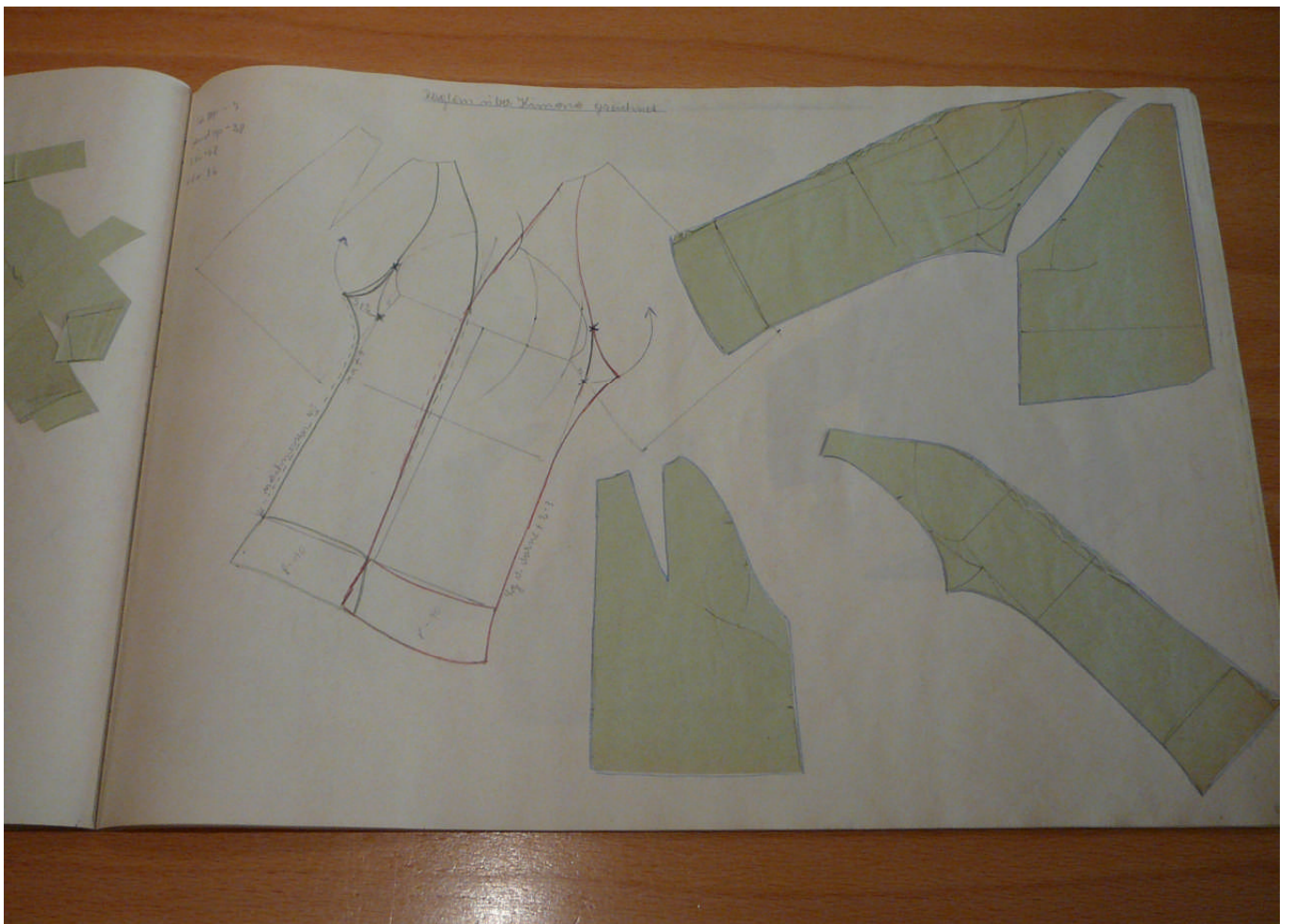
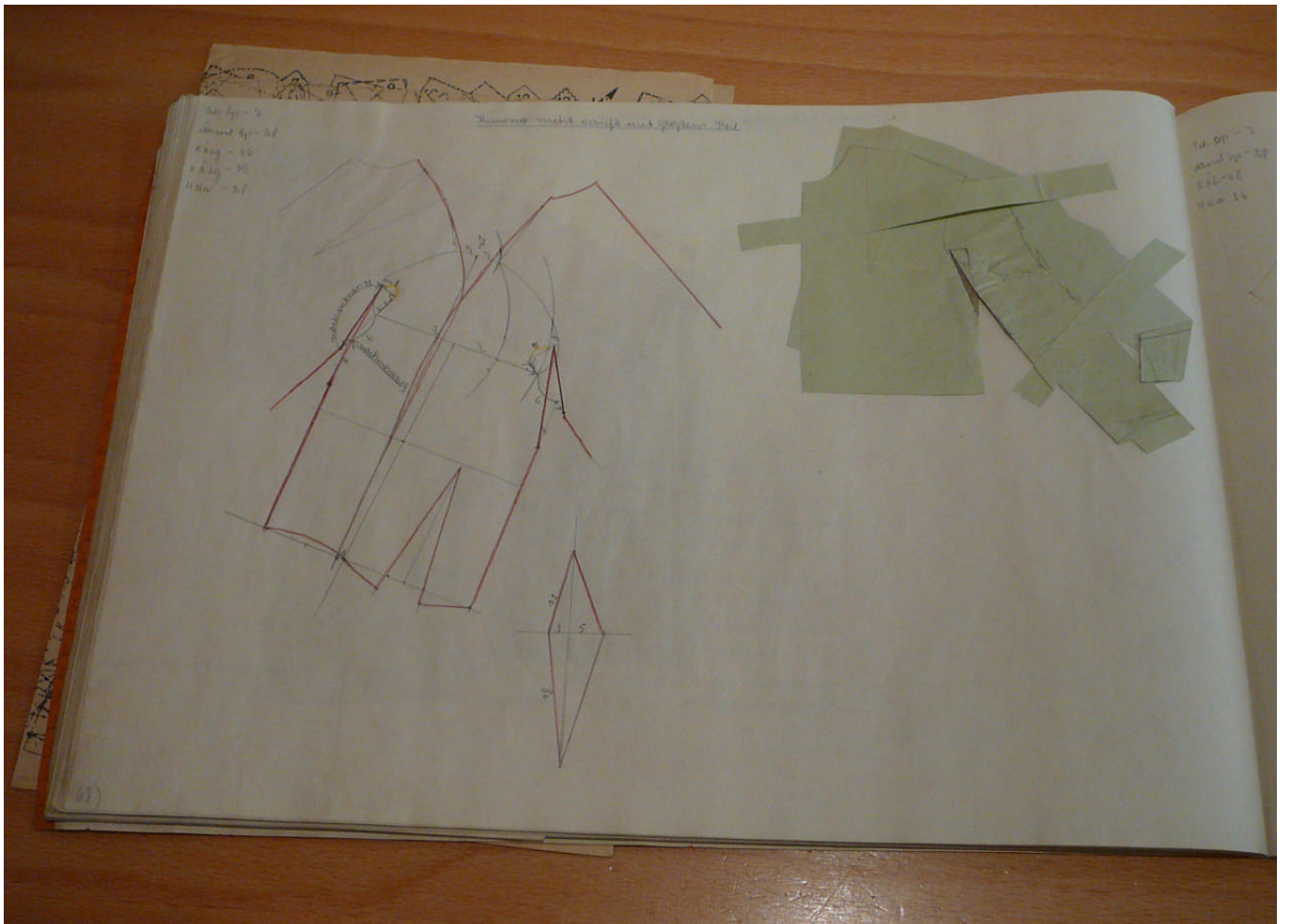


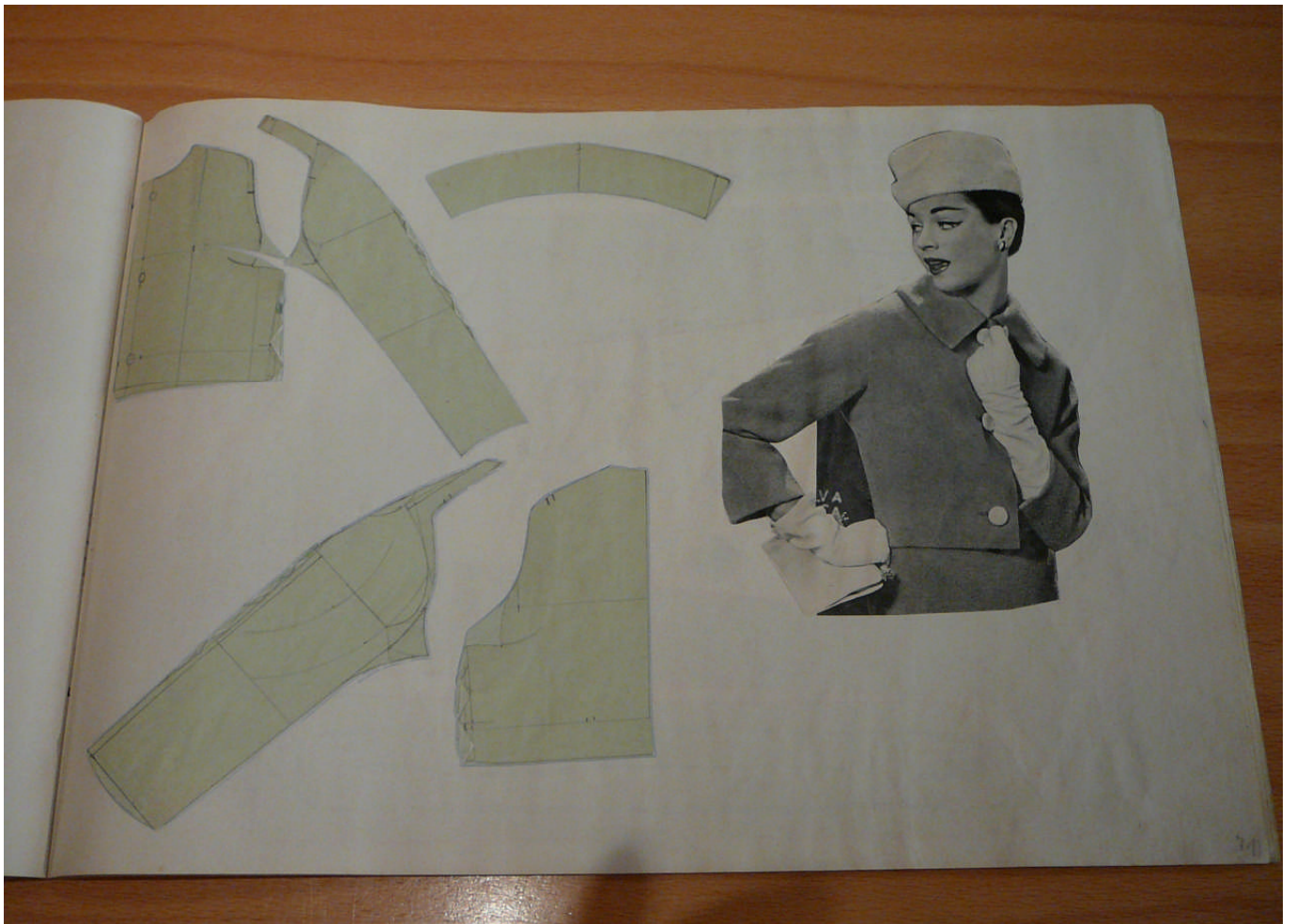
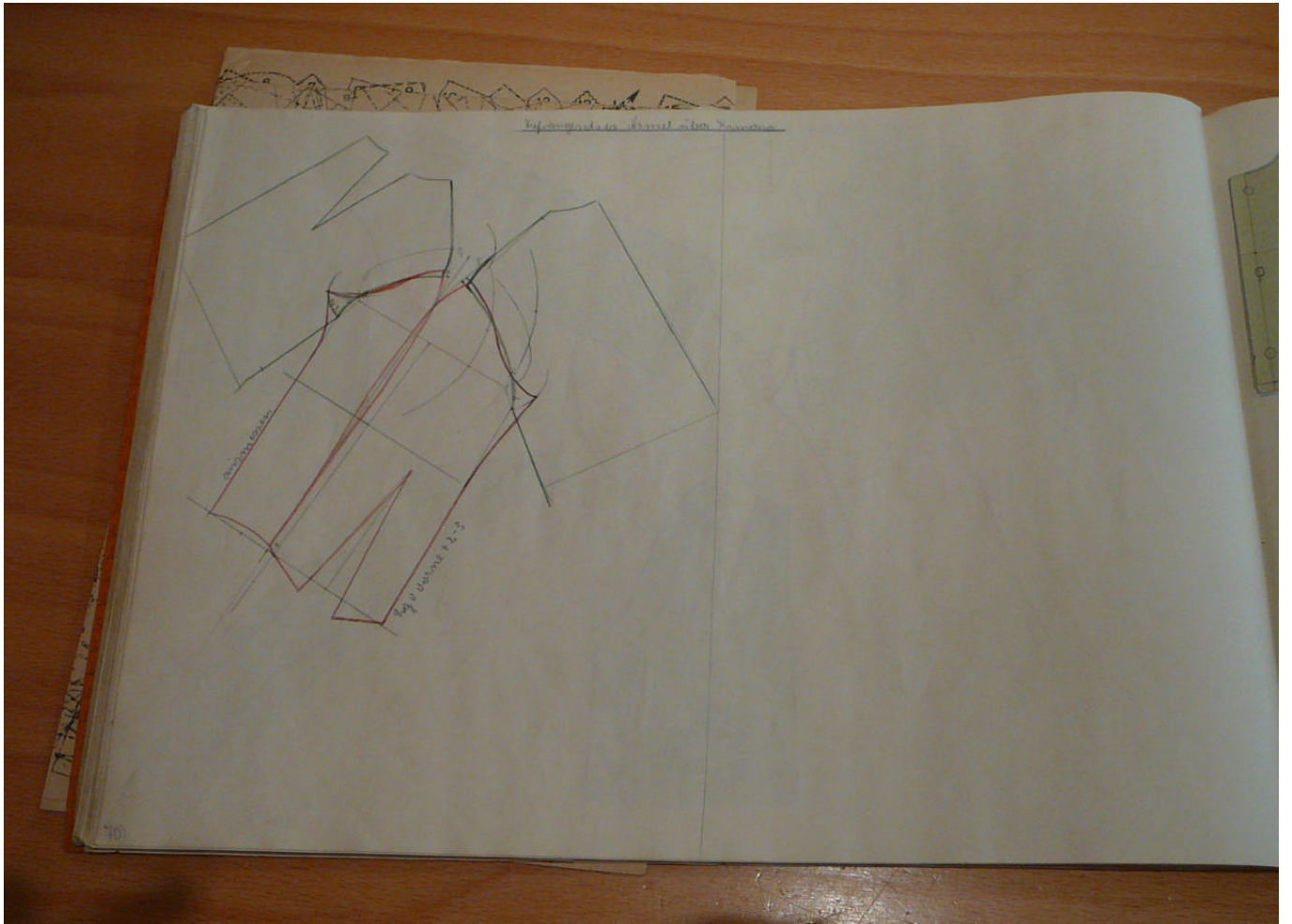


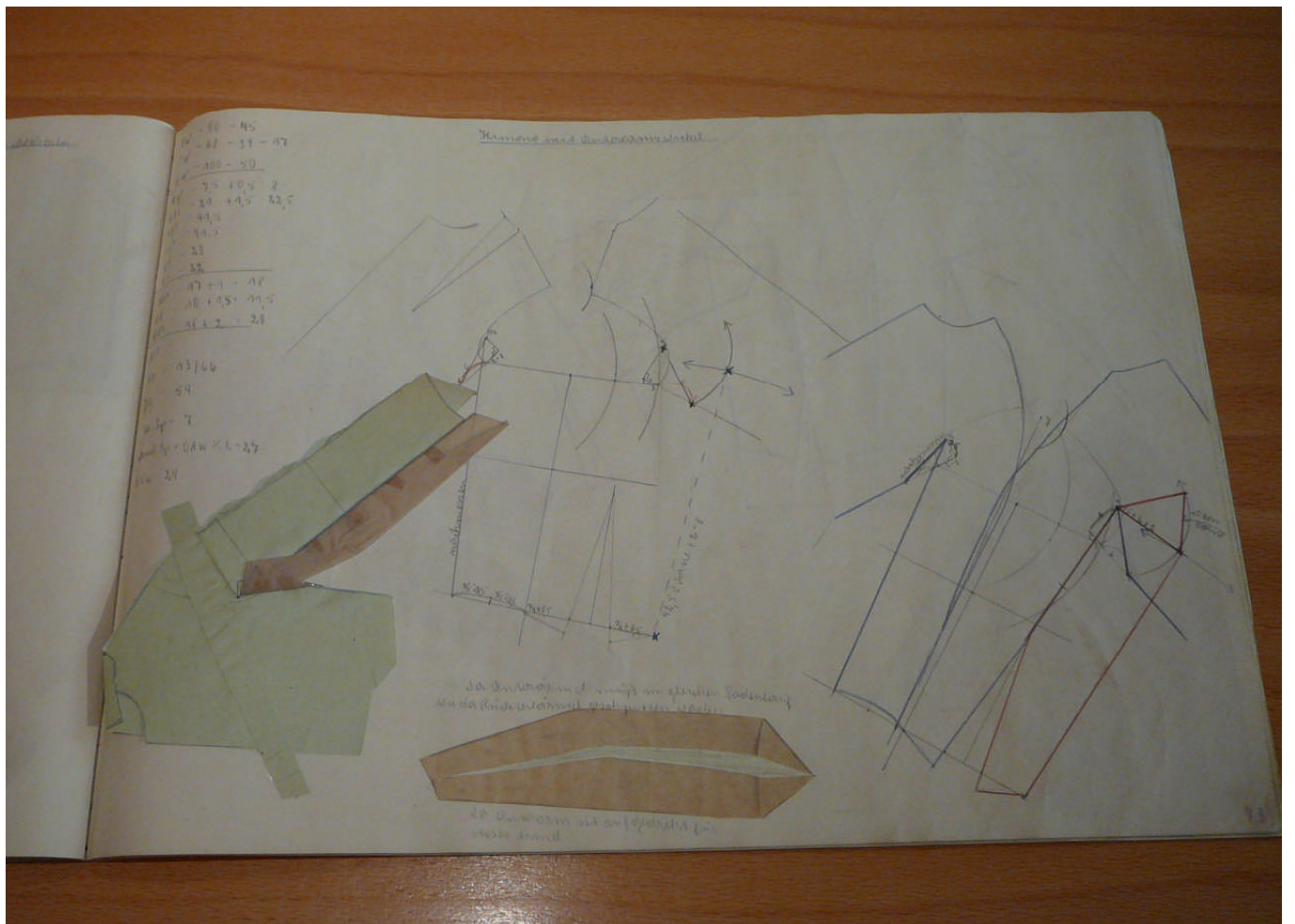


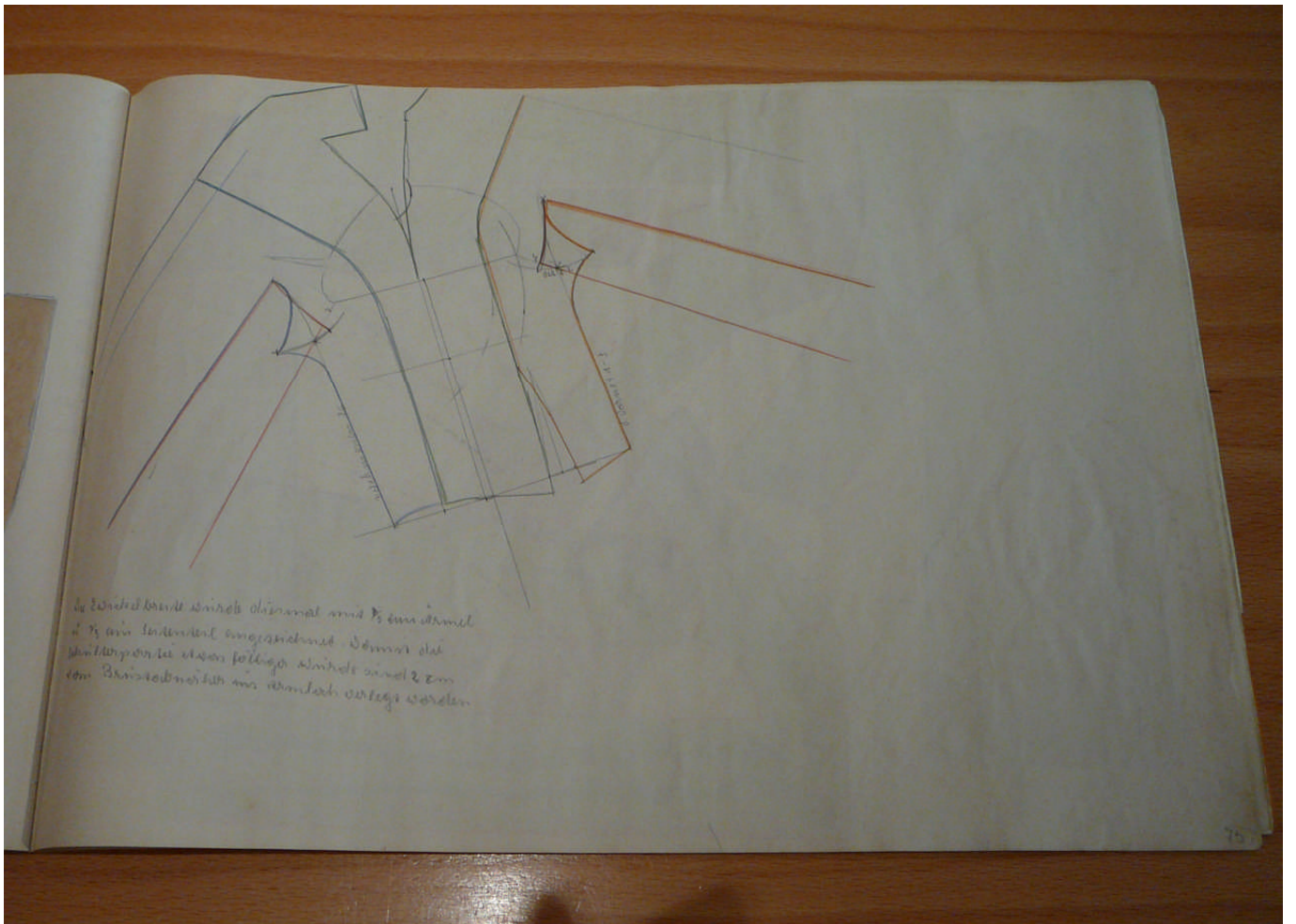
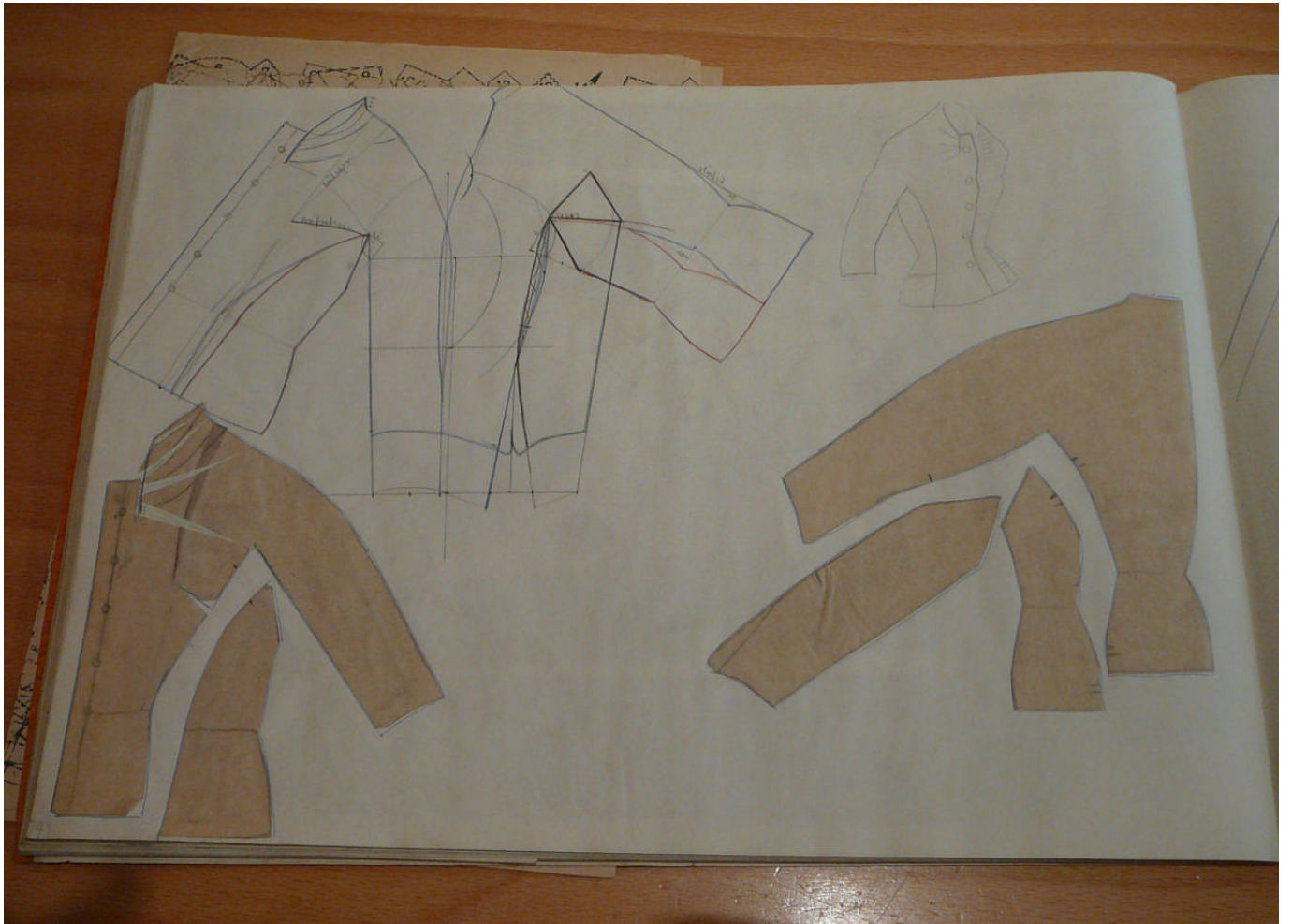




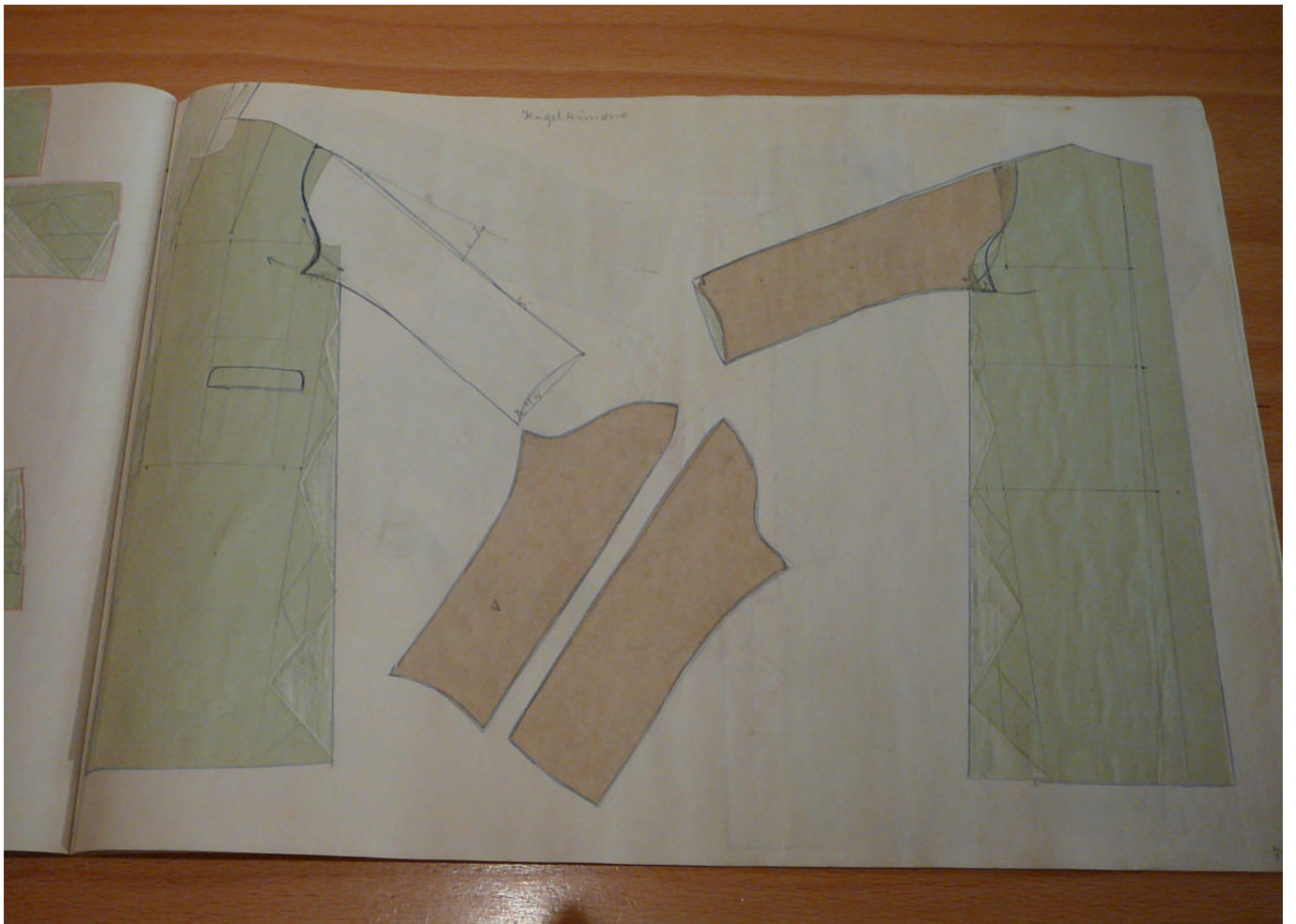


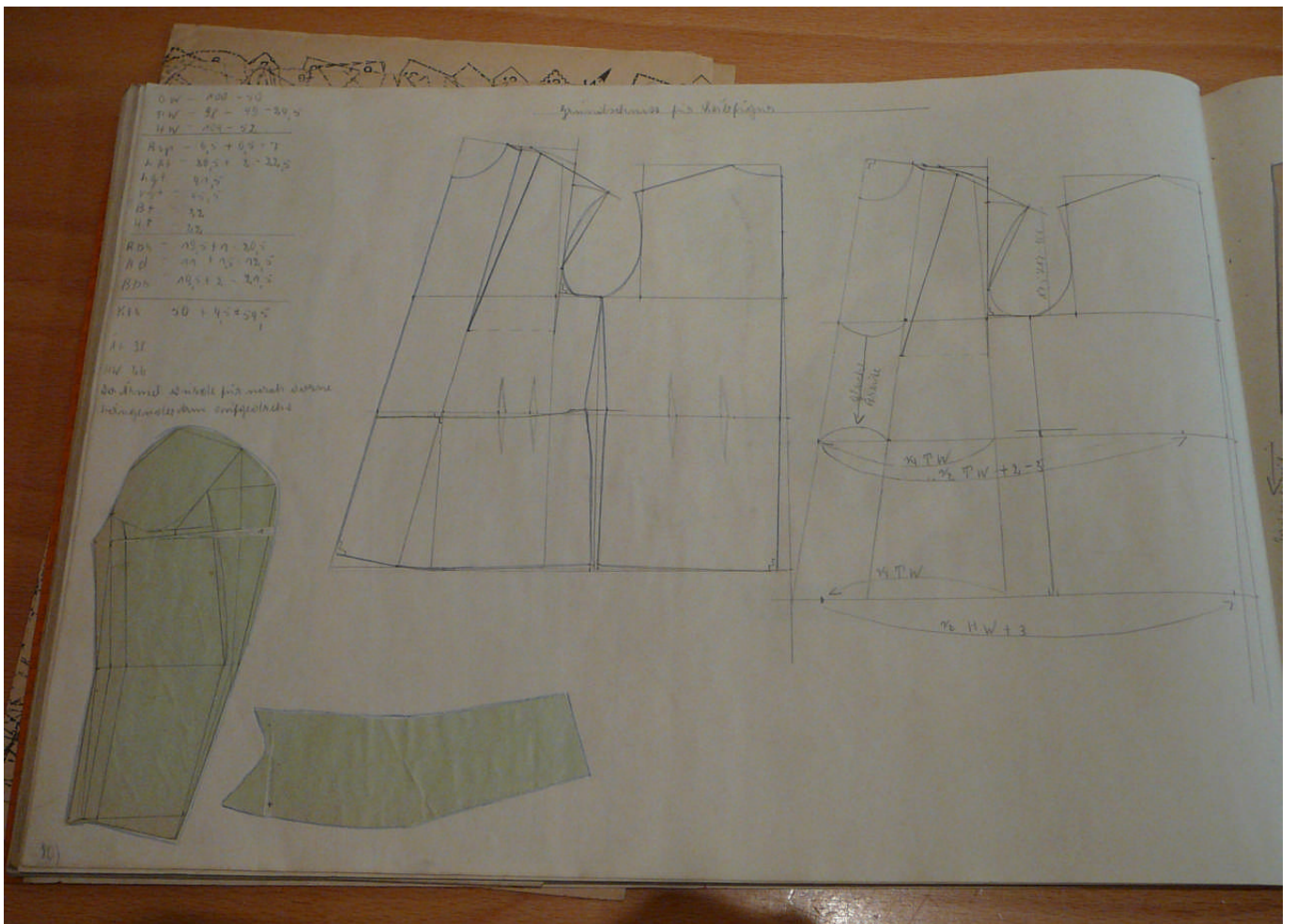


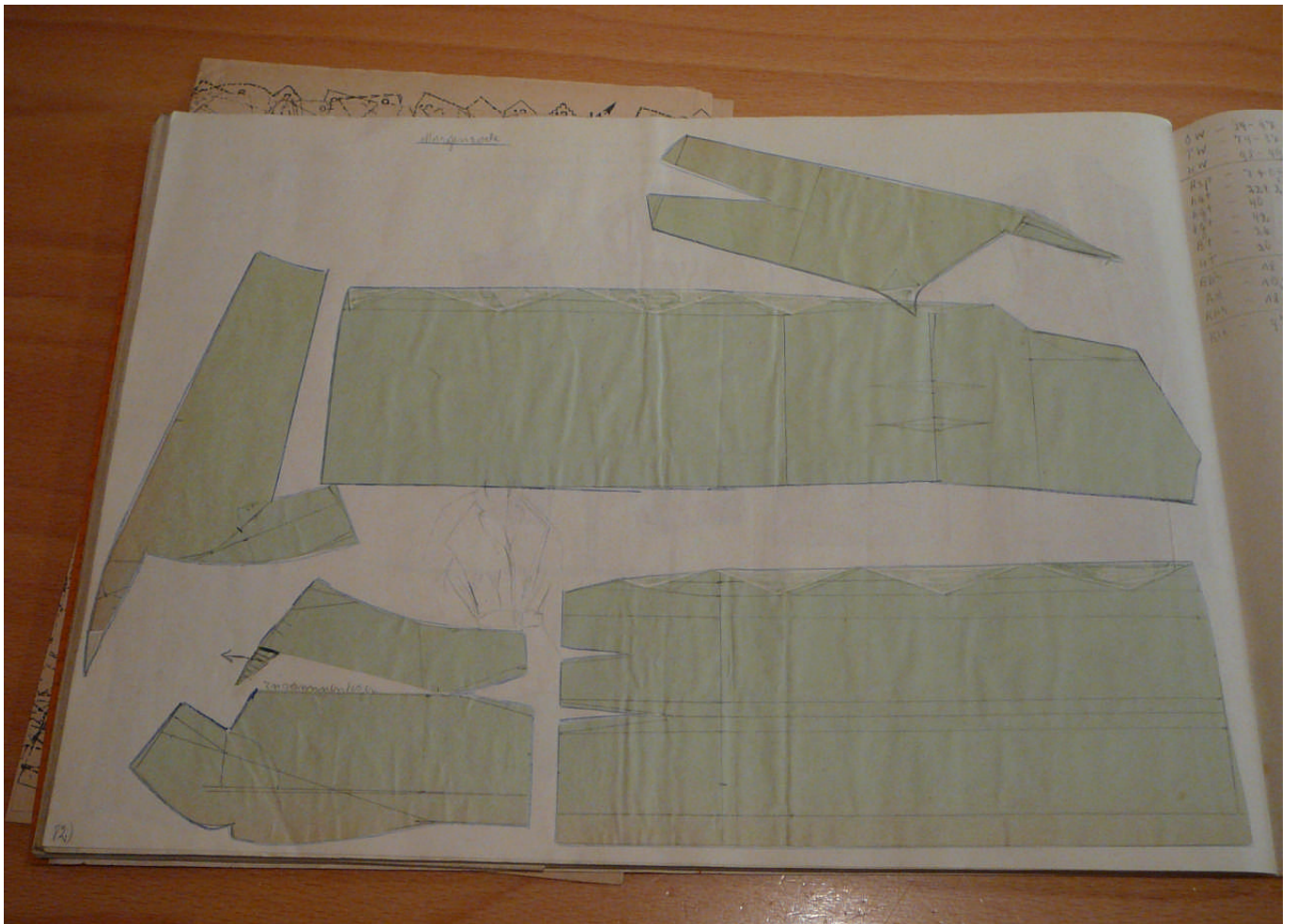
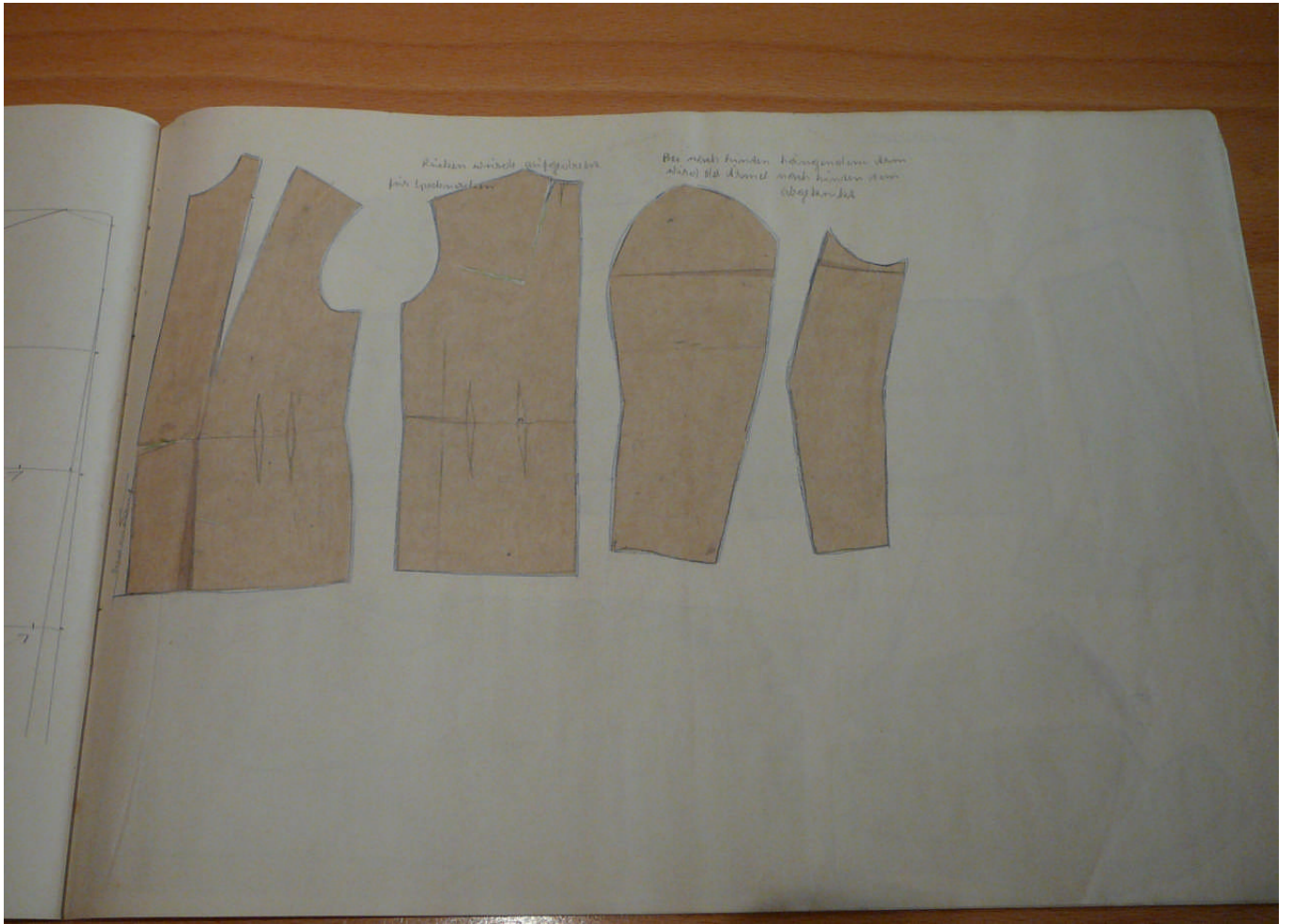


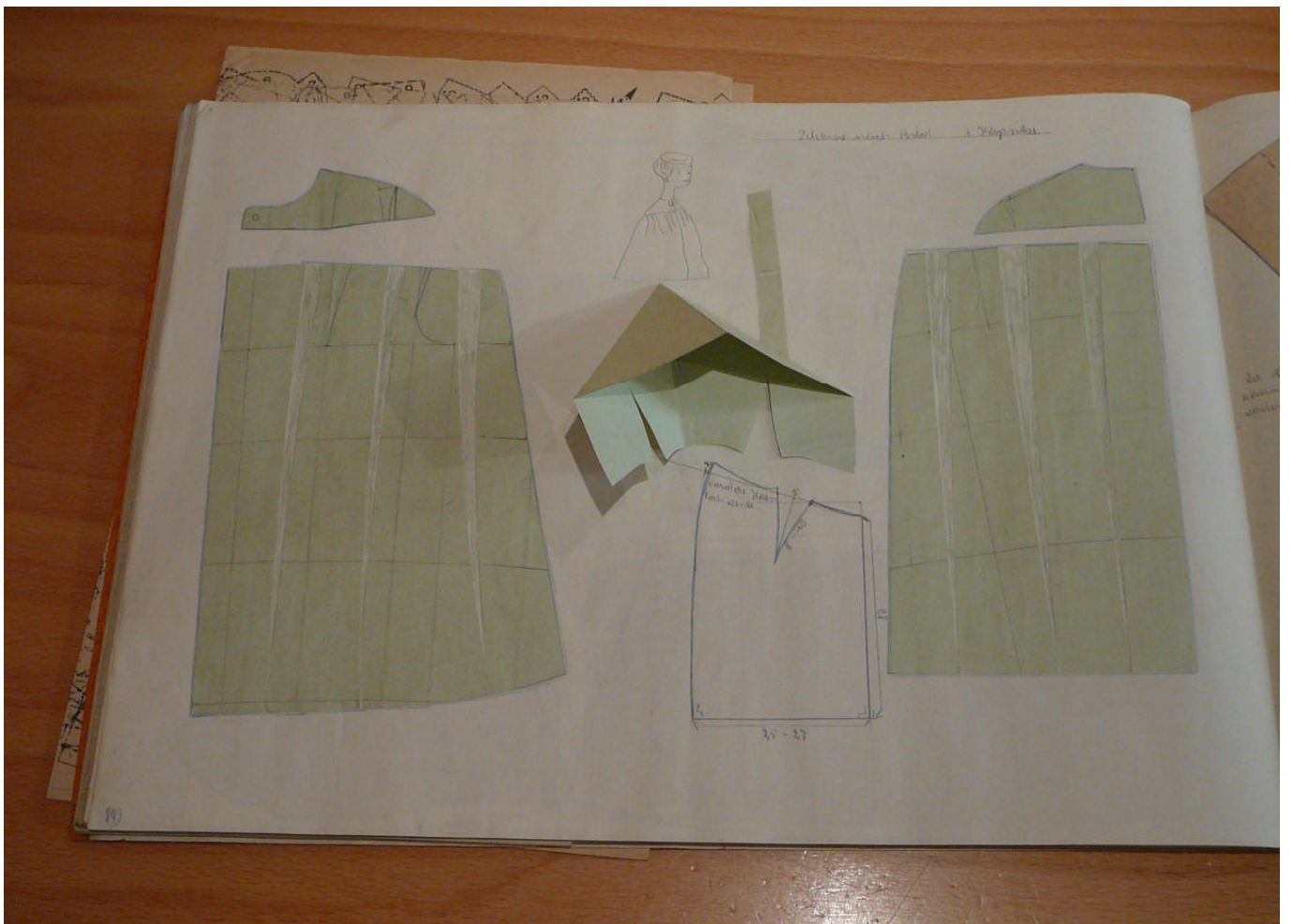
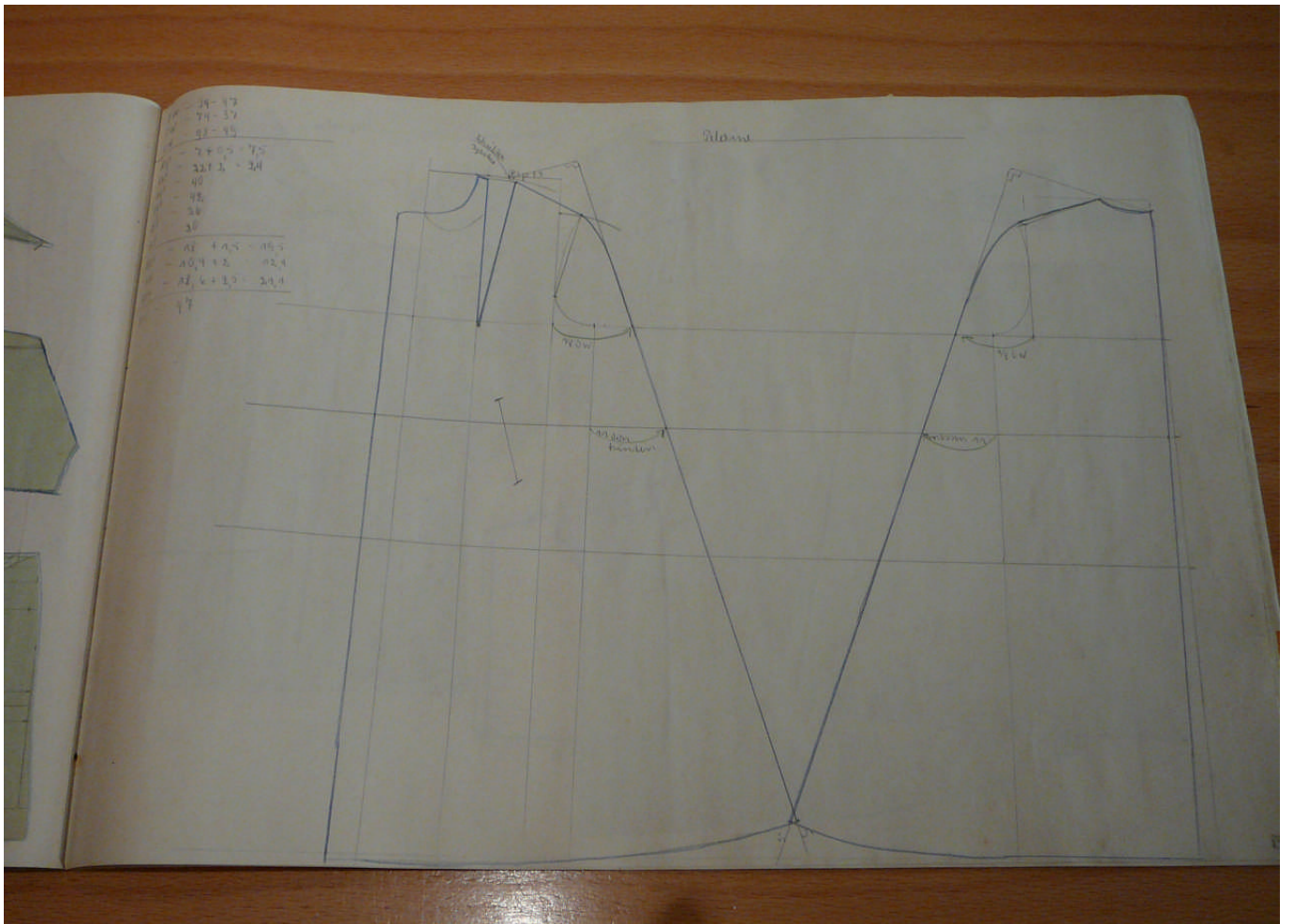


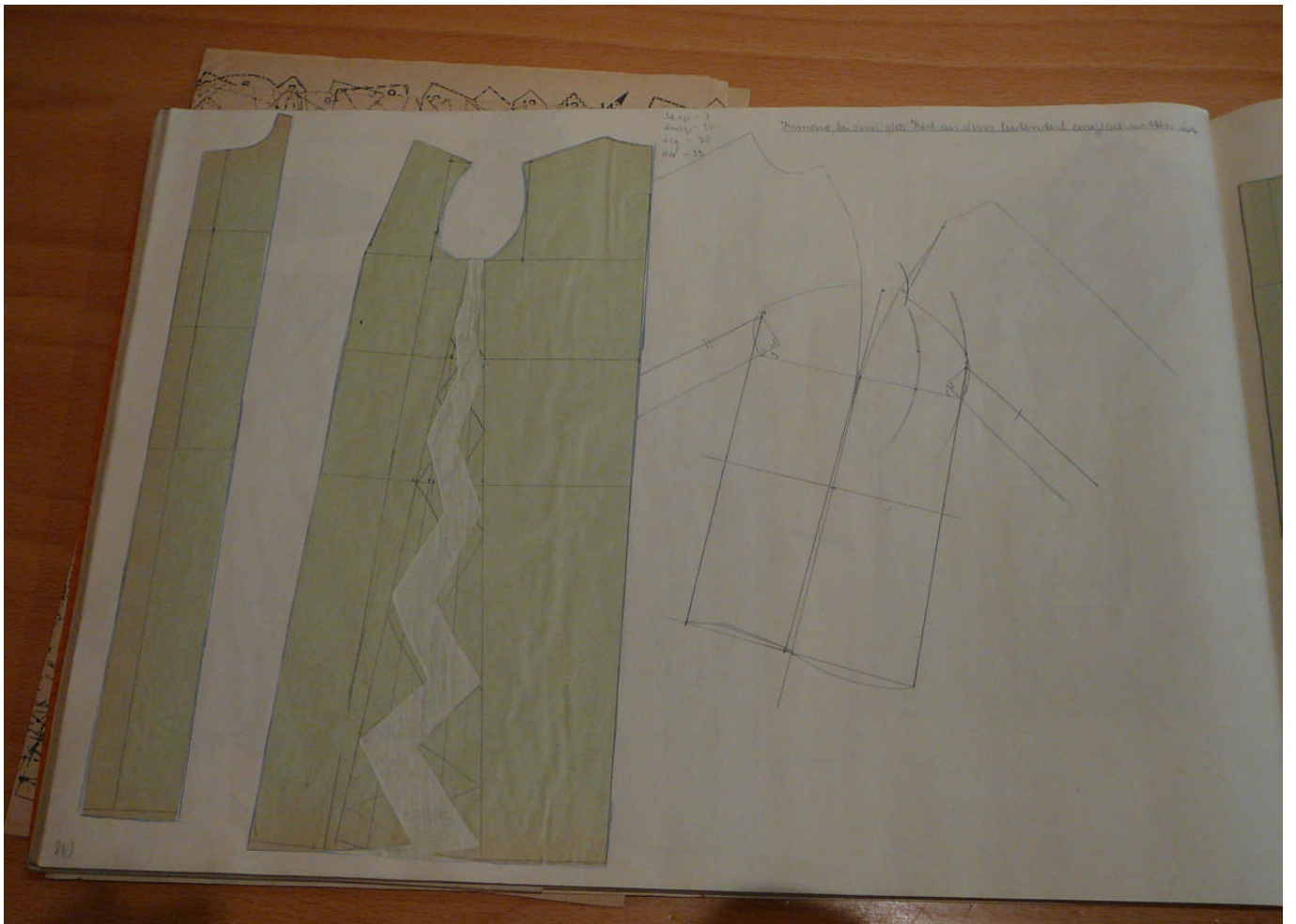
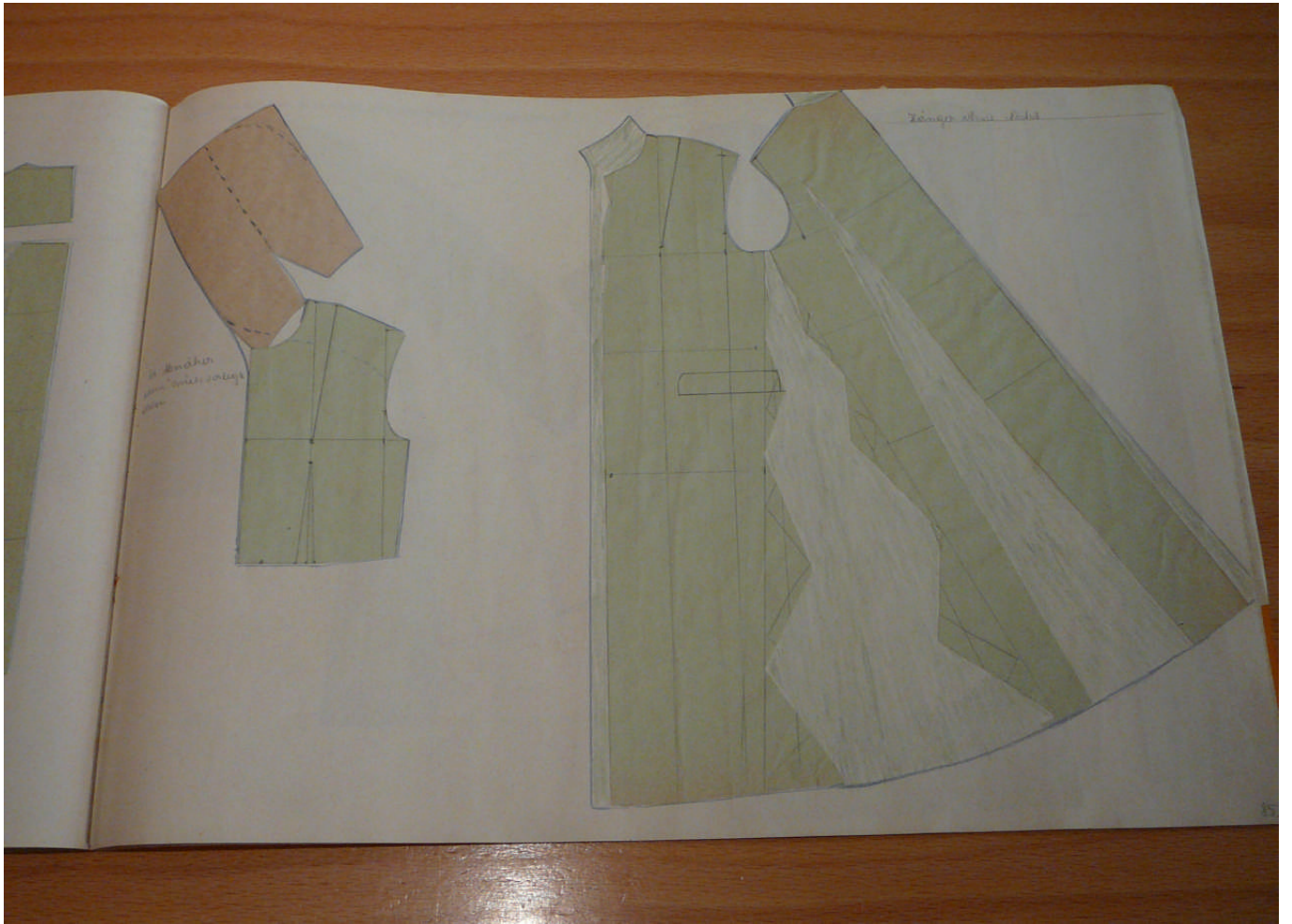
Die Welttasche wird dreimal mit 1,5 cm Stempel  
2,5 cm breit eingestrichelt. Demnach die  
Welttasche in einem festsitzenden Winkel von 2 cm  
ein Bandstreifen mit einem 1 cm Streifen werden.

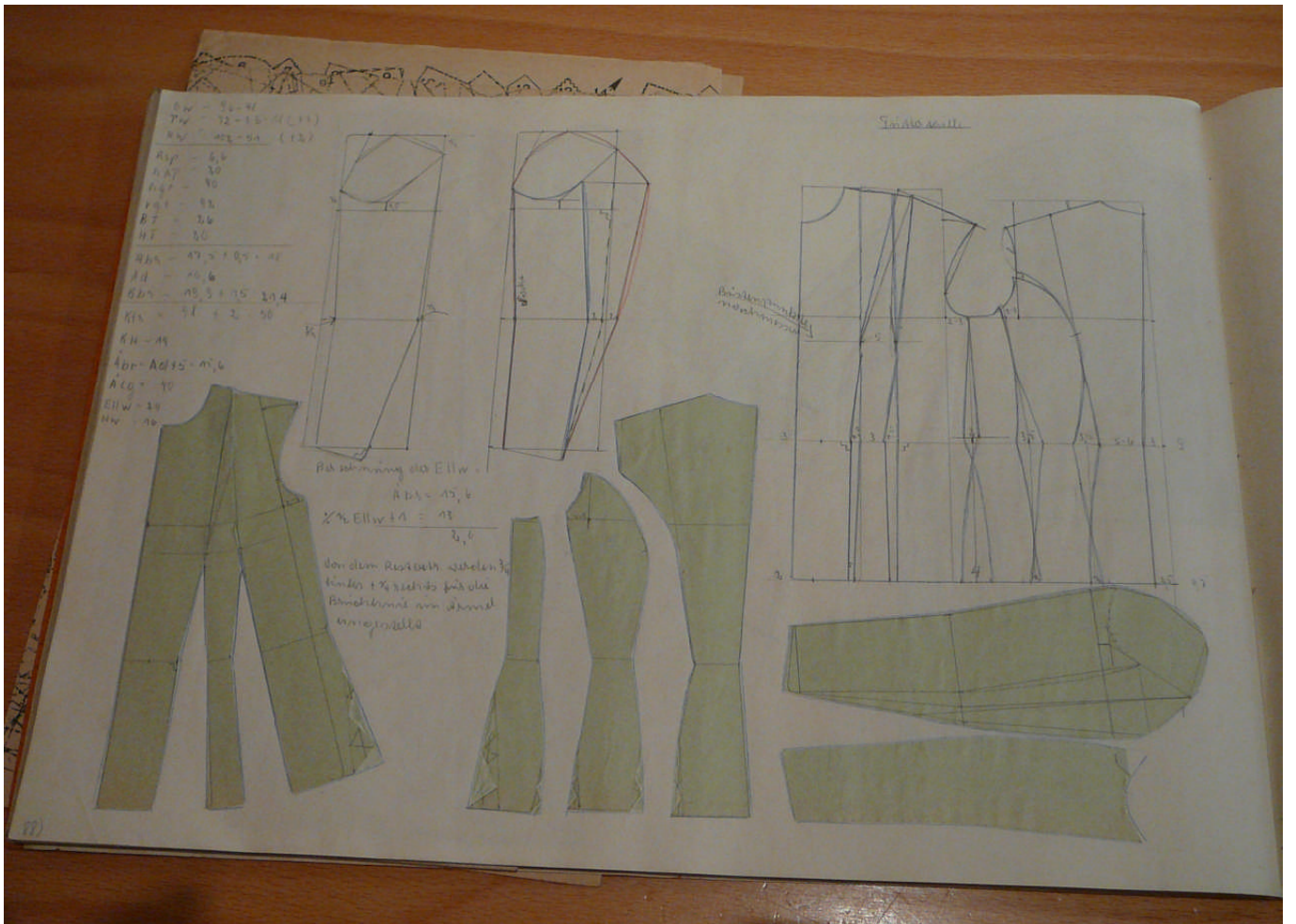
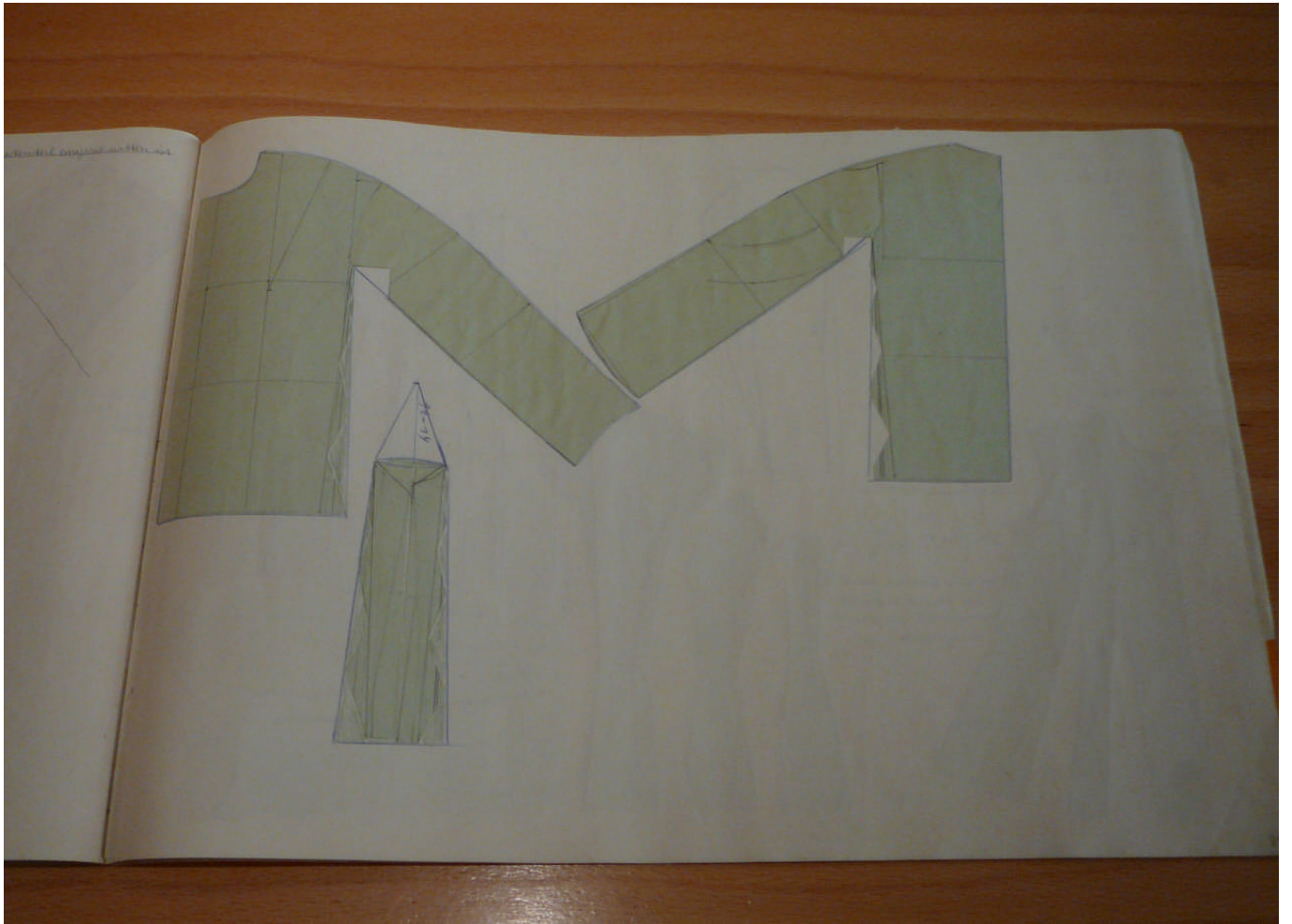


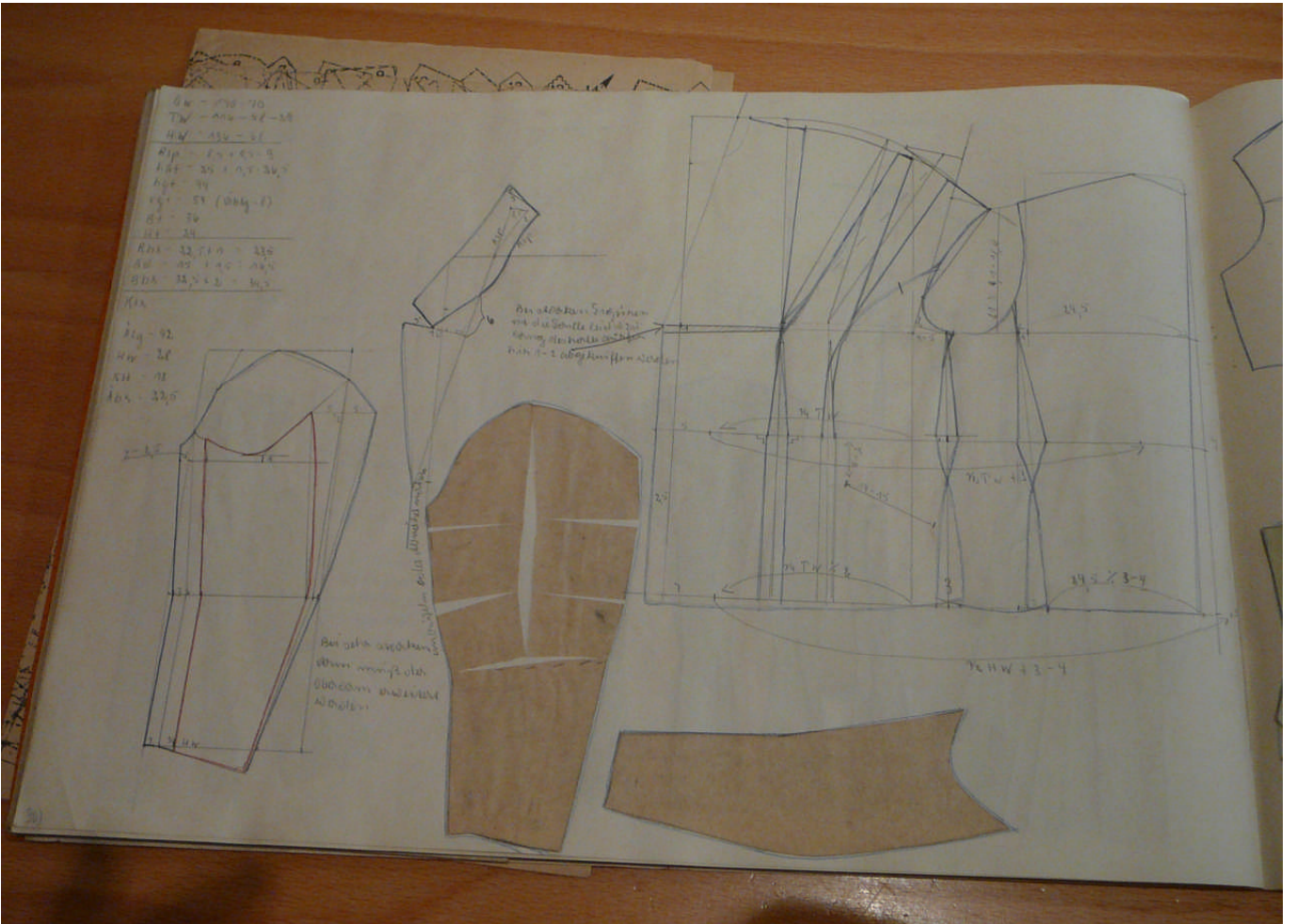
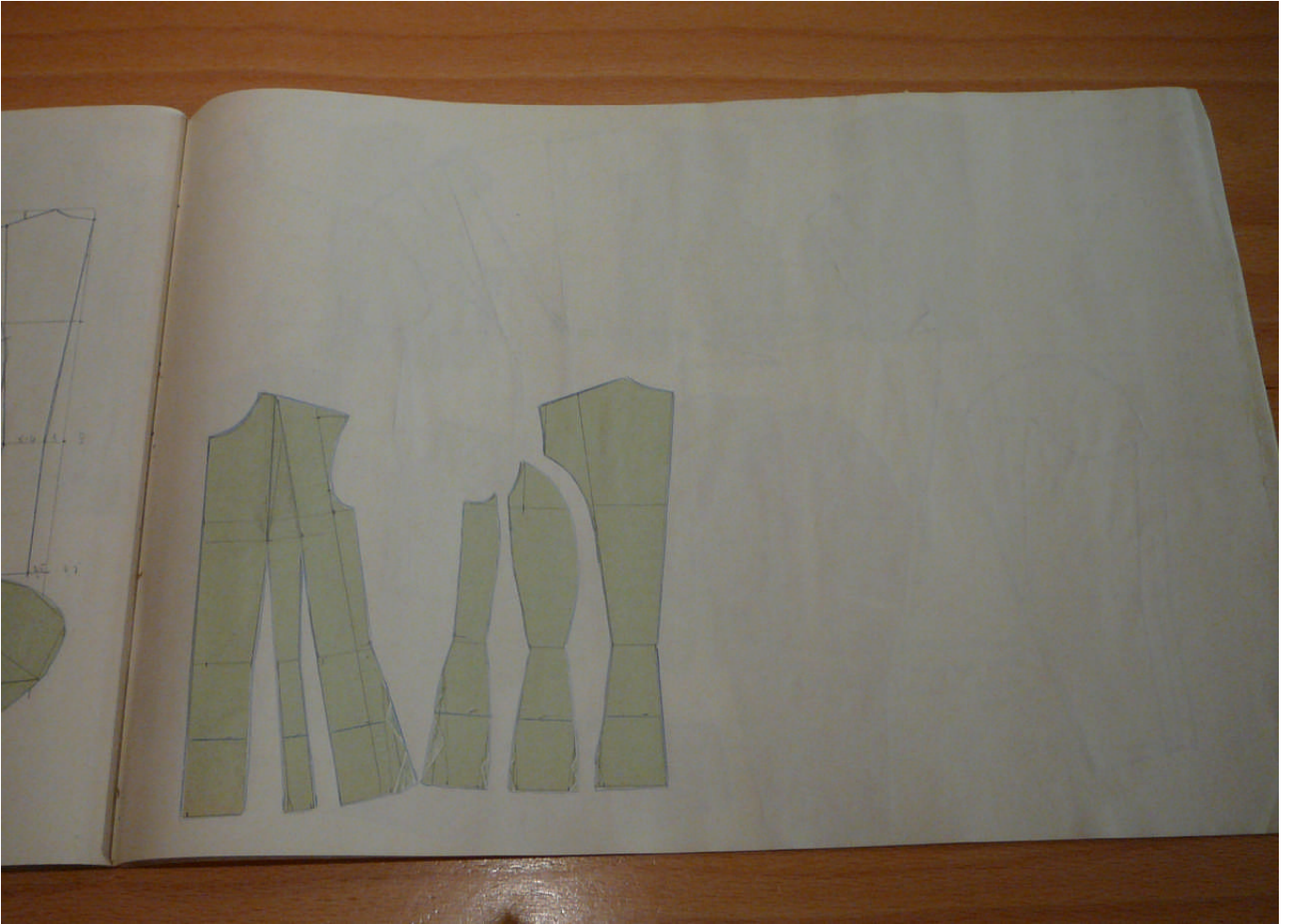


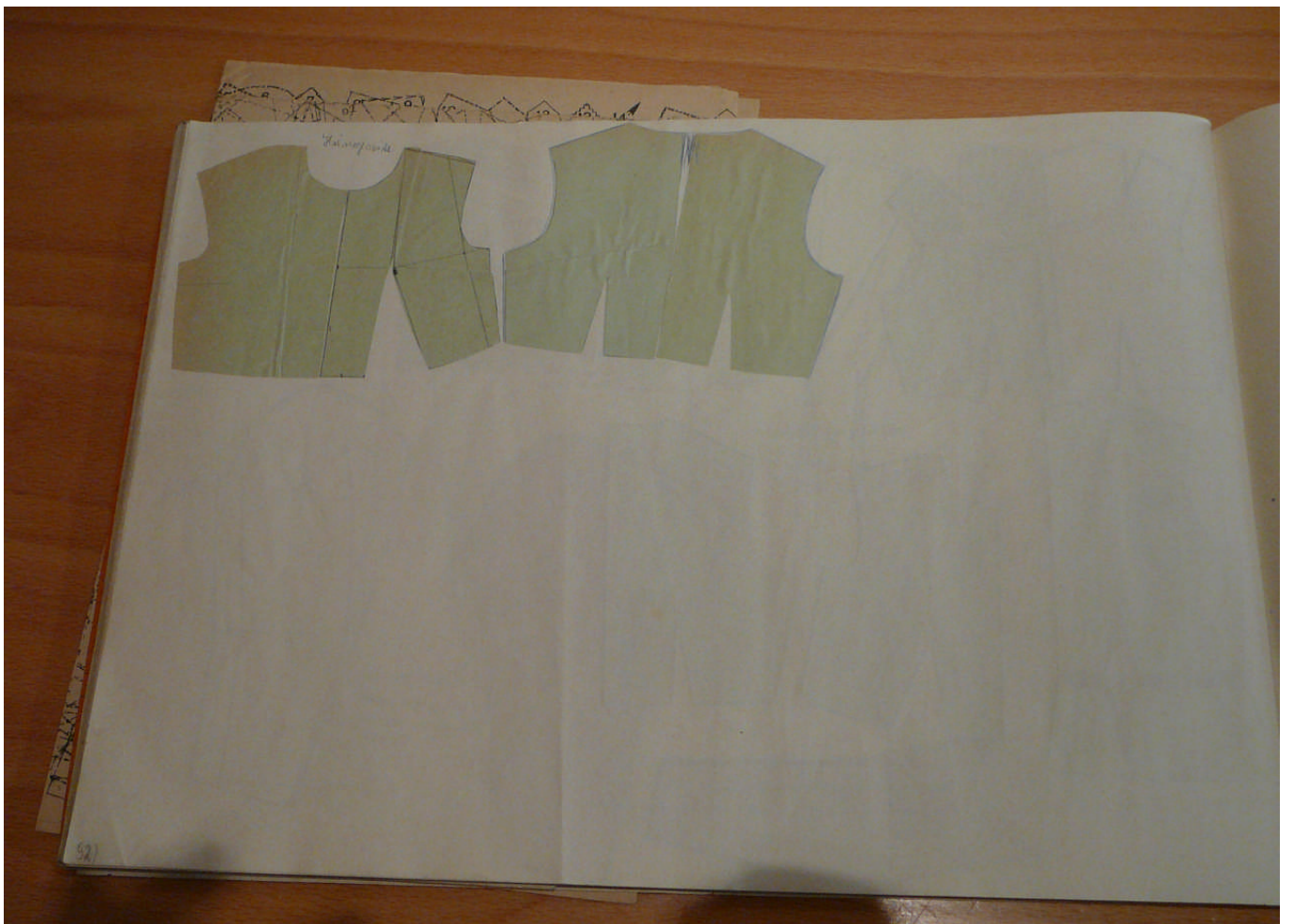
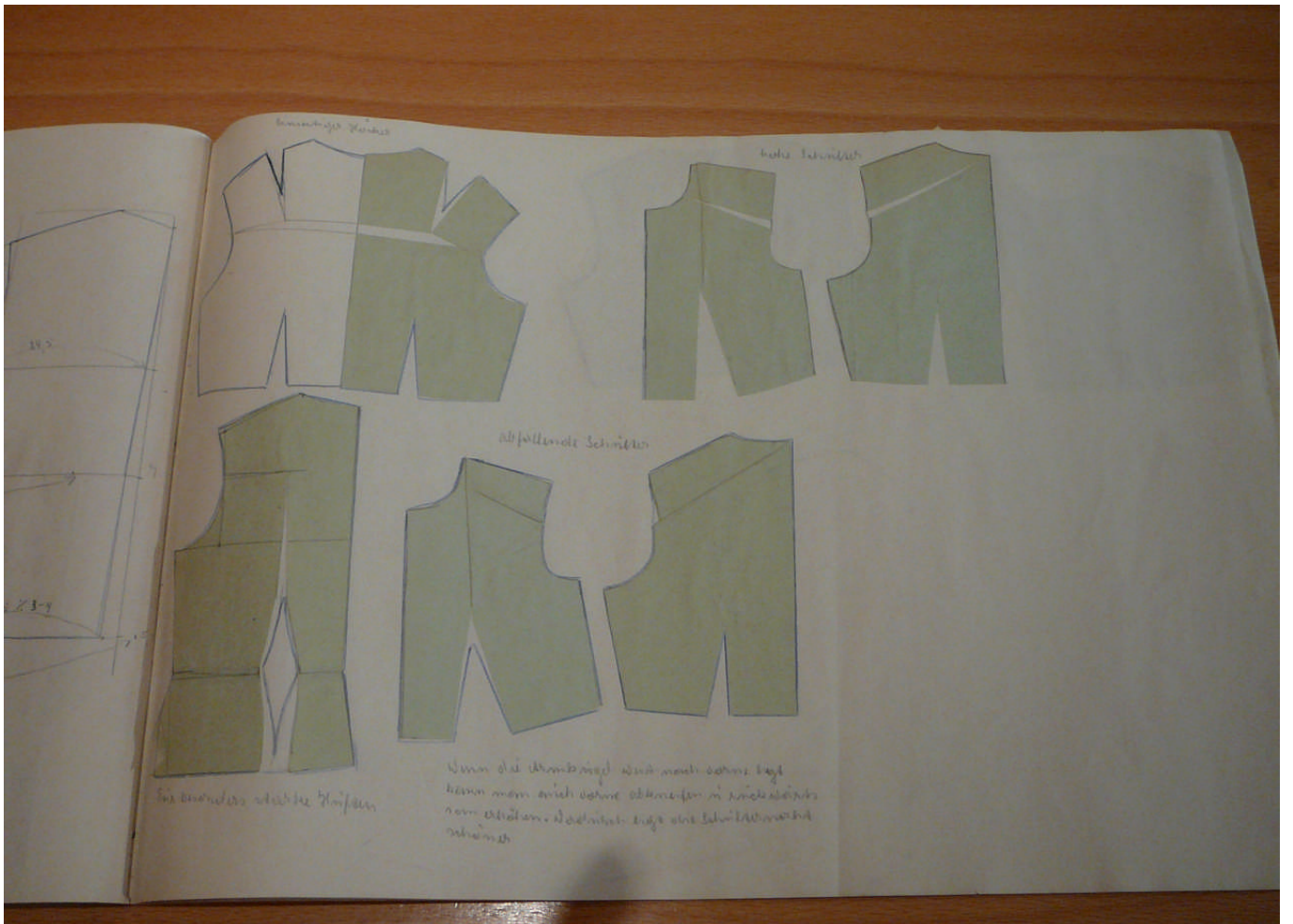












Geometrie

- 1) Die Winkelsumme im Dreieck
- 2) Die Winkelsumme im Viereck
- 3) Die Winkelsumme im n-Eck
- 4) Die Winkelsumme im Kreis
- 5) Die Winkelsumme im Kreisbogen
- 6) Die Winkelsumme im Kreisbogen
- 7) Die Winkelsumme im Kreisbogen
- 8) Die Winkelsumme im Kreisbogen
- 9) Die Winkelsumme im Kreisbogen
- 10) Die Winkelsumme im Kreisbogen
- 11) Die Winkelsumme im Kreisbogen
- 12) Die Winkelsumme im Kreisbogen
- 13) Die Winkelsumme im Kreisbogen
- 14) Die Winkelsumme im Kreisbogen
- 15) Die Winkelsumme im Kreisbogen
- 16) Die Winkelsumme im Kreisbogen
- 17) Die Winkelsumme im Kreisbogen
- 18) Die Winkelsumme im Kreisbogen
- 19) Die Winkelsumme im Kreisbogen
- 20) Die Winkelsumme im Kreisbogen

Arithmetik

- 1) Die Addition
- 2) Die Subtraktion
- 3) Die Multiplikation
- 4) Die Division
- 5) Die Potenzrechnung
- 6) Die Wurzelrechnung
- 7) Die Logarithmen
- 8) Die Binomische Formeln
- 9) Die Binomische Formeln
- 10) Die Binomische Formeln
- 11) Die Binomische Formeln
- 12) Die Binomische Formeln
- 13) Die Binomische Formeln
- 14) Die Binomische Formeln
- 15) Die Binomische Formeln
- 16) Die Binomische Formeln
- 17) Die Binomische Formeln
- 18) Die Binomische Formeln
- 19) Die Binomische Formeln
- 20) Die Binomische Formeln

Algebra

- 1) Die Gleichungen
- 2) Die Gleichungen
- 3) Die Gleichungen
- 4) Die Gleichungen
- 5) Die Gleichungen
- 6) Die Gleichungen
- 7) Die Gleichungen
- 8) Die Gleichungen
- 9) Die Gleichungen
- 10) Die Gleichungen
- 11) Die Gleichungen
- 12) Die Gleichungen
- 13) Die Gleichungen
- 14) Die Gleichungen
- 15) Die Gleichungen
- 16) Die Gleichungen
- 17) Die Gleichungen
- 18) Die Gleichungen
- 19) Die Gleichungen
- 20) Die Gleichungen